

Environmental and Social Monitoring Report

PUBLIC

Semi-Annual Safeguards Monitoring Report
March 2025

Samoa: Enhancing Safety, Security and Sustainability of Apia Port Project

Prepared by Samoa Ports Authority for the Ministry of Finance and Economic Management and the Asian Development Bank (ADB).

This environmental and social monitoring report is a document of the borrower. The views expressed herein do not necessarily represent those of ADB's Board of Directors, Management, or Staff, and may be preliminary in nature. Your attention is directed to the [“terms of use”](#) section of ADB's website.

In preparing any country program or strategy, financing any project, or by making any designation of or reference to a particular territory or geographic area in this document, ADB does not intend to make any judgments as to the legal or other status of any territory or area.

Environmental and Social Monitoring Report

Grant 6013-SAM: Port Development Project

Grant 0654-SAM: Enhancing Safety, Security, and Sustainability of Apia Port Project

Project No: 47358-002

Date: December 2024

Samoa: Enhancing Safety, Security, and Sustainability of Apia Port Project

Semi-Annual Safeguards Monitoring Report

July - December 2024

Prepared by Samoa Ports Authority for the Asian Development Bank.

This Semi-Annual Safeguards Monitoring Report is a document of the borrower. The views expressed herein do not necessarily represent those of ADB's Board of Directors, Management, or staff, and may be preliminary in nature.

In preparing any country program or strategy, financing any project, or by making any designation of or reference to a particular territory or geographic area in this document, the Asian Development Bank does not intend to make any judgments as to the legal or other status of any territory or area.

ABBREVIATIONS & ACRONYMS

ADB	Asian Development Bank
AMP	Asset Management Plan
CEMP	Construction environmental management plan (of the contractor)
CHEC	China Harbour Engineering Company (the civil works contractor)
CLO	Community liaison officer
CoC	Code of Conduct
CSS	Country safeguards system
DC	Development consent
DDR	Due diligence report
EMP	Environment management plan
ESSSAP	Enhancing safety, security, and sustainability of Apia port project
HSP	Health and safety plan (part of the CEMP)
GRM	Grievance redress mechanism (for the project)
GPA	Green Port Ambassadors
GPI	Green port initiatives to be developed through the 'Apia Green Port' component of the Project
GPPM	Green Port Practice Manual
MCR	Ministry of Customs and Revenue
MCIL	Ministry of Commerce Industry and Labour
MOF	Ministry of Finance
MNRE	Ministry of Natural Resources and Environment
MNRE (DEC)	Ministry of Natural Resources & Environment, Division of Environment & Conservation
MWTI	Ministry of Works, Transport, and Infrastructure
PAM	Project administration manual
PEAR	Preliminary Environmental Assessment Report (under the CSS)
PMU	Project Management Unit (within SPA)
PUMA	Planning and Urban Management Agency (within MWTI)
QEIA	Quarry Environmental Impact Assessment
QEMP	Quarry Environmental Management Plan (QEMP)
QSRP	Quarry Site Restoration Plan
QTMP	Quarry Traffic Management Plan
RHDHV	Royal Haskoning DHV
SMR	Semi-annual safeguards monitoring report
SPA	Samoa Ports Authority
SPS	Safeguard policy statement 2009 (of ADB)
TMP	Traffic management plan (part of the CEMP)

TABLE OF CONTENTS

EXECUTIVE SUMMARY	ii
1 INTRODUCTION.....	1
Background and Purpose of the Report.....	1
Project Description	2
2 PROJECT PROGRESS	3
Project Overview	3
Safeguards Overview and Updates	4
Green Port Initiatives (GPI) Coordination Update	5
3 ENVIRONMENTAL SAFEGUARDS PERFORMANCE AND MONITORING	6
Status of Temporary Access and Wharf EIA, Quarry EIA, and Project CEMP Submission and Implementation	6
Health and Safety	7
Incidents and Near-misses	9
4 SOCIAL SAFEGUARDS PERFORMANCE AND MONITORING	11
5 CONSULTATION, INFORMATION DISCLOSURE & CAPACITY BUILDING	14
Consultation Activities during July - December 2024	14
Consultation Activities Planned for –January - June 2025	14
Capacity Building and Training	15
GRIEVANCE REDRESS MECHANISM	16
Grievances Received	16
6 SUMMARY AND CONCLUSIONS	18
Recommendations for follow up actions	19
Annex A: Project and Reporting Context.....	20
Annex B: Training & Consultation material	25
Annex C: Vailele-uta storage & precast site	26

EXECUTIVE SUMMARY

Purpose of the report: This is the seventh semi-annual social and environmental safeguards monitoring report (SMR) for the Enhancing Safety, Security, and Sustainability of Apia Port Project (the Project), covering the period July – December 2024. It details the social and environmental safeguards activities undertaken to date, with a focus on planning and pre-commencement activities and reporting the status of these activities against the project covenants, as included in the project agreements and project administration manual (PAM).

The Project: The Project is financed with a grant of \$75.03 million from ADB and \$12.77 million from other sources and was scheduled to be completed on 21 March 2024. The currently forecast completion date is June 2026. The outputs of the project are focused on:

- Output 1: safety and capacity of port infrastructure
- Output 2: climate and disaster resilience of port operations
- Output 3: border security and trade facilitation; and
- Output 4: gender sensitive green port initiatives.

Institutional arrangements: The implementing agencies are the Samoa Ports Authority (SPA) (for outputs 1, 2 and 4) and Ministry of Customs and Revenue (MCR) (for output 3) and the executing agency is the Ministry of Finance (MOF). A project management unit (PMU) is established to deliver the project, which includes a construction supervision consultant supporting implementation of safeguard requirements (amongst other things).

Progress and status of safeguards: In 2019, a development consent (DC) was obtained for the overall Project (excluding materials sourcing) from the Planning and Urban Management Agency (PUMA), then located in Ministry of Natural Resources and Environment (MNRE), but since moved to Ministry of Works, Transport, and Infrastructure (MWTI).

The table below summarises the progress and status of safeguards during this reporting period. It is noted that several of the Project milestones have been delayed (and completion dates revised), due to a combination of external and internal factors.

SAFEGUARDS	
PEAR FOR VAILELE-UTA PRE-CAST CONSTRUCTION AND STORAGE YARD	PEAR reviewed by PMU and returned to the Contractor for revision. Lease of land is finalized (copy of lease letter and approval letter from MNRE can be found in Annex B). Draft PEAR was reviewed by Beca and DCA was submitted in December 2024. PUMA review of DCA is pending. Community consultation is ongoing.
DC FOR TEMPORARY X-BLOC STORAGE IN THE LAGOON	A DC for the temporary storage of X-blocs in the lagoon adjacent to the Temporary access road was received. Decision for six months dated 22 March 2024. Expired 22 September 2024. Not currently being renewed but an extension has been requested with PMU. CHEC have prepared an EIA to triple the size of the storage area. Beca have provided review comments on the EIA and returned these to the contractor for revision.
PSEMP FOR NIGHT WORKS AT THE PORT	Reviewed by PMU and returned to the Contractor for revision. Further revision not yet received by PMU. No night works are currently planned for the port area.

IMPLEMENTATION	<p>Regular inspections have been undertaken of the Olo Quarry, the Lauli'i Mountain Quarry and the Lauli'i Primary School Quarry by the National Environmental Specialist (NES) following her appointment in October 2023.</p> <p>No safeguards material has been provided for the Lauli'i Primary School Quarry works and no safeguards implemented on the site (except some warning signs).</p> <p>The Lauli'i Mountain Quarry has not been used to provide raw rock material in 2024, but the crusher is in use and material is stockpiled on site. Stockpiles adjacent to residential buildings have been reduced in height following site inspections.</p> <p>The Lauli'i Mountain Quarry is not currently consented (consent expired).</p> <p>The Olo quarry DCA does allow for a worker accommodation facility which currently exists.</p>
GREEN PORT'S INITIATIVE	<p>SPA presented for the 46th Pacific Marine Transport Alliance Conference with the support of Justin Cross.</p> <p>RHDHV undertook two missions this reporting period, one from 15-26 June and the second in 18-21 November. Several documents have been prepared, including the 'Apia Port Instructions for Visiting Vessels Handbook', the 'first phase' Environmental Management Plan for Apia Port and the Green Port Practice Manual with approaches to monitoring initiatives.</p> <p>Several reports were also submitted to SPA for comments.</p>
HEALTH & SAFETY	<p>PMU continues to monitor closely and complete safety audits in conjunction with the contractor to ensure safety requirements are enforced. Several safety issues were identified during this reporting period by the PMU, and CHEC has been instructed to action these instructions.</p> <p>The contractor is not proactive with regard to safety management, and extremely slow to respond when issues arise.</p> <p>Occasional communicable disease awareness and prevention training (with workers and the community ahead of construction activities) continued to be delivered by Samoa Family Health Association (as reported in the previous SMR) during the reporting period, notably after the arrival of additional international workers. The most recent training was held on 12 December 2024.</p>
ENVIRONMENTAL AUDIT FINDINGS & REQUIRED ACTIONS	<p>Following a visit by the International Environmental Expert in November it was determined that the outstanding actions for compliance with Port operations identified in the previous SMRs are ongoing.</p>
SOCIAL SAFEGUARDS	<p>Social safeguards monitoring continues for the works occurring without DC at the Lauli'i Primary School Quarry site. This includes particular attention towards community safety, noise, dust and any illegal dumping of waste.</p>

	<p>The development of a proposed new rock storage site at Vailele-uta near the public cemetery is continuing to be monitored for safeguards concerns. The PMU previously requested that the contractor stop work on this site when they started development before a consent had been issued.</p> <p>Concerns remains for the quality of some of the workers' accommodation at the quarry sites, with the PMU continuing to monitor and provide recommendations to CHEC on these issues during inspections.</p>
CONSULTATION & TRAINING	<p>CHEC undertook consultation regarding the proposed precast yard at Vailele-uta and the transport through the village by the heavy vehicles. There are no planned consultations for the next reporting period. However, ongoing issues will likely require further stakeholder consultation activities, including continued discussions on management of quarries and storage areas.</p> <p>Once again, greater transparency and oversight has been requested.</p> <p>With mobilisation of workers for the breakwater construction occurring during this reporting period, CHEC has confirmed that workers have undergone the proper induction and orientation, including the signing of the Code of Conduct. Previous PMU requests to be invited to witness these processes remain unheeded.</p> <p>Communicable diseases training continues to occur with the latest training for the new staff cohort in December 2024.</p>
GRIEVANCES	<p>Two grievances received through the GRM have been considered closed satisfactorily, while a third grievance is close to resolution pending the complainant's continued acceptance of the agreed payment terms with CHEC.</p>

Actions for next reporting period: the following actions have been identified for the next reporting period (January - June 2025):

- Monitor implementation of safeguards actions at the Lauli'i Primary School Quarry
- Monitor for any safeguard actions associated with the development of the rock storage site at Vailele-Uta next to a public cemetery.
- Reiterate request to CHEC (and Samoa Family Health Association) for inclusion of SPA-PMU in inductions for new workers.
- Audit training material, provide capacity building where required and continue to monitor content and attain acceptable quality of communicable disease awareness and prevention training for CHEC staff. Ensure that Gender Based Violence is included as a topic in training, and that staff are aware of provisions relating to GBV in the Code of Conduct.
- Continue to remind parties of expectation to keep consultation records including minutes, actions, attendance (sex dis-aggregated), venue, date and outcomes
- Continue to monitor quality of workers' accommodation and provide recommendations to CHEC
- Monitor public perceptions of the Project and keep SPA management informed
- Complete outstanding environmental audit actions for compliance with Port operations
- Encourage the contractor to fill the outstanding Community Liaison Officer position
- Monitor and enforce safety actions identified through safety audit
- Encourage the contractor to employ and mobilise a suitably qualified Health, Safety and Environmental Manager.

During construction, monitoring inspections and audits continue to be undertaken. The usual periodic updating will also be undertaken in line with the SPS requirements.

1 INTRODUCTION

Background and Purpose of the Report

The Project: the Government of Samoa (the government) has received finance from the Asian Development Bank (ADB) to upgrade the infrastructure and operations at the Apia Port. The Enhancing Safety, Security and Sustainability of Apia Port (the Project) is financed with a grant of \$75.03 million from ADB and \$12.77 million from other sources. The construction contract is considerably behind schedule and was not completed by the scheduled date of 21 March 2024. The Project will:

- improve efficiency, safety, and environmental sustainability of seaport in Apia, Samoa (the Port)
- upgrade terminal infrastructure to enhance safety and capacity
- strengthen the existing breakwater to enhance resilience to climate change and severe storms,
- construct a customs facility with a new container X-ray scanner to facilitate effective border management, and
- support green port initiatives (GPI) to promote clean and sustainable port operations and management, and which are gender sensitive.

More information about Apia, the Apia Port, and the Project has been included in Annex A.

Institutional arrangements: there are various implementing agencies tasked with the outputs of the Project.

- The SPA and Ministry of Customs and Revenue (MCR) are the project's implementing agencies, and the Ministry of Finance (MOF) is the executing agency.
- The SPA has established a project management unit (PMU) which includes a construction supervision consultant. The consultant is supporting the PMU to, amongst other things, implement safeguard requirements which include:
 - making the contractor aware of the approvals required under national laws and regulations, providing advice on the preparation of any Environmental Impact Assessments (EIA) and subsequent construction environmental management plan (CEMP),
 - making sure that the contractor is aware of their safeguards' obligations under the contract, and
 - reviewing and disclosing the monitoring and other reports prepared by the contractor.
- The civil works contractor — China Harbour Engineering Company (CHEC) — was awarded the construction contract on 29th March 2021. They employed an environmental consultant from Think Environment Consult who developed the Environmental Impact Assessments (EIA) and subsequent construction environmental management plan (CEMP).

The PMU currently includes a national social safeguards consultant; a national social safeguards and environmental consultation consultant; an international social safeguards and gender specialist; and an international environmental safeguards specialist, which provide safeguards support. The previously reported recruitment for an environmental management officer has been discontinued following discussion and agreement between SPA and ADB that this role can be managed through the existing safeguards activities of the PMU.

Further information about the institutional arrangements has been included in the annex of the previous Semi-Annual Monitoring Report (SMR).

Purpose of this report: Preparation and disclosure of this SMR is a requirement under the:

- ADB Safeguard Policy Statement 2009 (SPS)
- ADB Access to Information Policy 2018,
- the project administration manual (PAM), and

It must be prepared by the SPA as the implementing agency and submitted to both MOF and ADB. The purpose of this SMR is to:

- document the activities of SPA and MCR in ensuring that all necessary environmental and social safeguards are properly implemented for the Project, and
- report the status of the activities against the project workplan and covenants as included in the Project agreements and PAM.

The Project has been screened and classified as category B for environment and category C for both involuntary resettlement and Indigenous Peoples.

The Planning and Urban Management Agency (PUMA) of Ministry of Works, Transport and Infrastructure (MWTI) issued a development consent (DC) for the overall project on 29 October 2019, subject to 37 conditions, and in August 2022 issued the DC for the operation of a quarry at Lauli'i subject to 34 conditions. These conditions are provided in Annex D.1 and D.2 respectively. A number of ancillary consents and variations have been sought and issued to support these main consents including for the wheel wash and storage area at Lauli'i quarry, extended working hours at Lauli'i quarry and the current application for Xbloc storage in the lagoon, which will be reported on in the next reporting period.

Project Description

The Project seeks to improve the safety, security and environmental sustainability of Apia International Port. The Project includes the following outputs and is estimated to cost USD\$74.16 million:

- Output 1: enhancements to safety and capacity of port infrastructure enhanced
- Output 2: resilience and preparedness of port operations to climate change and natural hazards enhanced
- Output 3: enhancements to border security and trade facilitation capacity; and
- Output 4: gender sensitive GPI pilots.

Further information and detail regarding the scope of works for each output has been included in Annex A.

2 PROJECT PROGRESS

Project Overview

Key milestone dates for the project are included in Annex A. It is noted that several of the milestones have not been achieved by the Contractor and estimated completion dates revised.

A number of internal factors within CHEC's control and management of the project delivery continue to cause delays, including:

- A long time taken by the contractor to find a suitable hard rock quarry site, obtain permits, develop the quarry site, and commission the crushing plant. The plant was finally commissioned at the Lauli'i Mountain Quarry in April 2023. Since then, CHEC have opened further quarries at Olo (October 2023) and Lauli'i Primary School (November 2023). CHEC's geologists have visited Samoa in June 2024 and found that the Olo and Lauli'i Primary School Quarries are suitable for the mining of large rock for the breakwater. However, they report that CHEC's mining technique is breaking the large rock into smaller sizes. Further, their geologists confirmed that neither Lauli'i Mountain Quarry, nor Alafua Quarry, are suitable for the production of large rock for the breakwater.
- Inability to mine sufficient quantities of larger rock sizes required for the breakwater construction – noting that the delay in commencing quarry work has limited the time available to source the larger rock. Large rock has been located at each of the quarries where the contractor has operated. However, the contractor is not satisfied with the economic cost of harvesting these large rocks. CHEC are now firmly resolved to progress with their proposed alternative breakwater design, which requires smaller rock sizes, with the larger underlayer and toe rocks replaced with concrete elements.
- Poor cash flow resulting in limited buying capacity in the local market for items such as cement, aggregate and diesel. This has been exacerbated by CHEC's inability, or desire, to procure a second advanced payment guarantee to assist with the cash flow.
- Very slow production of suitable management plans which meet the contract requirements.
- Extremely slow procurement procedures with CHEC, especially at their head office. CHEC report that it takes at least three months to get purchases approved via their head office. An example is the flood lights for the project, where an alternative design was approved in October 2023, and CHEC still have not completed the order for the lights; expected arrival is mid-April 2025.
- Inexperienced staffing on the project.
- Poor approach to quality. CHEC state themselves that their attitude is build it first and fix it later. This results in a significant volume of rework, and rework is often delayed while waiting for repair materials being shipped from overseas.
- Procurement of non-compliant materials which delays the installation. An example of this is the procurement of structural steel systems for the Maintenance Workshop. Here New Zealand sourced materials were approved. However, materials arrived on site direct from China, for which there was no compliant quality assurance provided. Since arrival the purlins for the structure have already started to rust. Construction has been halted by CHEC while sort out their quality issues.

Safeguards Overview and Updates

The overall safeguards requirements are set out in a number of documents including those prepared to comply with the CSS (including any conditions on consents such as any DC issued by PUMA and quarry license), project grant agreements, PAM, the preliminary environmental assessment report (PEAR) and land due diligence report (DDR).

In compliance with the ADB's Safeguard Policy Statement (2009) the project's safeguard categories are as follows:

Monitoring aspects of the Project	Category
Environment	B
Social	C
Indigenous	C

For this reporting period, the following updates are noted:

- A CEMP amendment was prepared by CHEC to support a DC application to PUMA to store Xblocs in the lagoon adjacent to the temporary access road in November 2023. This was approved by PUMA on 22 March 2024 and DC 1144/23 for a duration of six months. CHEC have sought an extension to this but have been told that a full EIA is required to support the application. CHEC have prepared a draft EIA and this has been reviewed by the CSC. The EIA was found to be deficient in several areas and did not consider the previous consent obtained (a new consultant was used by CHEC for the preparation of the EIA). The new EIA also seeks to triple the area of storage for Xblocs on the reef and incorporate a second access road across the reef from the temporary wharf direct to the precast yard.
- Consultation was undertaken with a portion of the Vailele village on 4 December 2024. The consultation was for the proposed precast and rock storage yard to be constructed at the Vailele Cemetery site. Concerns and strong opposition were raised by the community in relation to dust and noise both at the Vailele precast yard, but also for the haul rook down to the East Coast Road. The community is expecting that further consultation is required to discuss the mitigation of the issues.
- As noted in Sections 4 & 5, there are social safeguards concerns relating to works behind the Lauli'i Primary School and impacts on neighbouring households to the quarry storage area that have ongoing needs for consultation and engagement. SPA-PMU are monitoring these situations.
- Training on communicable disease awareness continues to be conducted by Samoa Family Health Association (engaged by CHEC) on an 'as required' basis during the reporting period, with refresher trainings every six months and any new staff cohorts receiving training within 4 weeks of commencing work.

Green Port Initiatives (GPI) Coordination Update

The activities undertaken on the Green Port Initiative by RHDHV in the last six months include the following:

In June 2024, a Gender Awareness Training was completed (see Annex B for power point from this session).

RHDHV undertook two missions in June and November 2024.

In July 2024, Justin Cross of the Royal Haskoning Team joined SPA in presenting the Samoa Green Ports Initiative for the 46th Pacific Marine Transport Alliance Conference.

During the reporting period, the following reports were made to SPA for comment:

- Business Continuity Training Report (Rev P01 issued by 15 August)
- Business Continuity Plan (Rev P02 issued 20 September).

3 ENVIRONMENTAL SAFEGUARDS PERFORMANCE AND MONITORING

Status of Temporary Access and Wharf EIA, Quarry EIA, and Project CEMP Submission and Implementation

The preceding SMR stated: “A DC was received for the Lauli’i village to backfill land behind Lauli’i Primary School to form a rugby playing field. The decision was dated 27 October 2023. CHEC are quarrying the rock in this area without having the necessary consents for the work. No environmental or social safeguards documentation has been received and no safeguards such as fencing around the quarry face have been implemented for this work.” This continues to be the case. No DCA has been received for quarrying in this area.

The preceding SMR stated: “A DC and PEAR were received for the Olo quarry. The DC decision was dated 27 October 2023.” A site inspection by ADB and the International and National Environmental Specialists identified that there is an accommodation facility on the site. The quarry DCA does not provide for this, and no environmental or social safeguards documentation has been received in relation to the accommodation facility.

A PEAR for the Vailele Pre-cast yard was reviewed in August and returned to CHEC for revision. The next revision has not yet been received. It is understood that completion and submission has been undertaken and awaiting response from PUMA.

An EIA was received from CHEC on 17 December 2024 for the extension of the temporary storage of Xblocs in the sea, north of Matautu wharf. Comments were made by Beca on this EIA to be addressed, as there were many critical elements of the EIA that were lacking. No response has been received to date.

Table 3.1: Quarry and Landside and Marine works and Components Overview (July – December 2024)

Document	Status	Party Responsible	Comment
Site Specific Environmental Management Plan for extended hours at the Port (PSEMP)	Awaiting revision by CHEC following review	CHEC	<ul style="list-style-type: none"> SPA has provided permission for extended working hours on the port site, but not at the contractor’s yard. A PSEMP has been reviewed but a revised version has not yet been received.
An EIA for the extension of Xbloc storage in the sea	Awaiting revision by CHEC following review	CHEC	<ul style="list-style-type: none"> Many critical elements missing from the EIA, awaiting update from CHEC. Preparation of safeguards documentation in progress.
A working CEMP for the Land and Marine works at the Port has been reviewed and returned to CHEC for revision.	Awaiting revision by CHEC	CHEC	<ul style="list-style-type: none"> Awaiting update from CHEC
A PEAR for the Vailele Pre-Cast Yard	Awaiting update by CHEC	CHEC	<ul style="list-style-type: none"> Awaiting approval by PUMA

Health and Safety

Status

Some parts of the CEMP require regular updating of the approved Health and Safety Plan (HSP) to incorporate these works, activities and locations. The updates are often completed as part of the task specific health, safety and environmental plans contained with CHEC's Method Statements. These Method Statements are reviewed by PMU and feedback provided prior to approval of the plans.

Implementation

PMU undertakes safety observations informally during our daily interactions on site and more formal inspections on a weekly cycle alongside the contractor. The contractor provides periodic reports following these inspections detailing any issues identified and the means of closing them out. In addition, the contractor conducts independent health, safety and environmental inspections at both the Port site and at their Quarry. As CHEC's Health and Safety Manager has not yet been confirmed, this role is being carried out by a Deputy Health and Safety Manager who lacks the necessary expertise. CHEC intends to engage a consultant (Ms. Aiono Meresaini) on a temporary basis from January 2025. All issues are communicated to the contractor in person immediately and confirmed by email to ensure clear communication and recording of issues. More serious infractions are raised via an Engineer's Instruction and the contractor is required to produce a formal report on the issue. During the reporting period PMU reached out to MCIL and PUMA to assist with monitoring and enforcement of H&S requirements and DC conditions respectively. MCIL has conducted an audit of CHEC's health and safety procedures on 9 October 2024 and had communicated to CHEC their findings and issues for CHEC to address. To the end of the reporting period 118 investigations have been requested. Table 3.2 summarises the repeatedly identified safety issues during the reporting period and actions to address and improve these. Figure 3.1 provides photographs from health and safety inspections of the construction site.

An inspection of the Contractor's Apia worker accommodation was undertaken on 18 November by the National and International Environmental Specialist and PMU's Social Safeguards Specialist and confirmed that the toilet facilities (Figure 3.1) identified as being deficient in the previous ADB Mission were remedied.

Table 3.2: Summary of Safety Issues and Actions

Issue	Description	Requested Actions
Lack of PPE	Personnel and visitors without any PPE have been identified. Common areas of concern include: failure to use noise protection; improper use of eye protection while welding; use of non-regulation safety boots; subcontractors coming into site without any PPE, and full cover skin protection during concreting.	Contractor continues to be non-compliant on basic PPE requirements in which Contractor's supervision is inadequate. This has been addressed in progress meetings in which the contractor has provided poor and insufficient reasoning. When identified on site, the PMU requests that the Contractor removes the personnel from site who do not wear the appropriate PPE. The Contractor will argue about removal of staff from site which demonstrates lack of leadership on their part.
Unsafe working at heights	Inadequate fall protection systems used when working at height.	The contractor is inconsistently using harness systems when working at heights. Furthermore, there are many instances where a "quick fix" is required and proper fall restraint is not applied. The contractor is inclined to construct their own platforms, for which proper safety restraint is neither

Issue	Description	Requested Actions
		designed nor implemented. We are regularly reminding the Contractor on these fundamentals. There have been several times where inspections have been cancelled where a platform is demonstrably unsafe for use,
Lifting loads over workers	Workers are not motivated to move away from the lift areas while the concrete skip is being moved.	The most common lifts are for the concrete skip when delivering fresh concrete. The workers are poorly educated and do not mind standing under suspended loads. Where possible, the contractor has been asked to only lift the concrete skip close to the ground to reduce this hazard. Added to this is rare use of tag lines to control the swing of the lift.
Lack of Site Security	Site security is lacking as workers open fences to create short cuts to their destination.	Contractor instructed to ensure security is maintained. Holes in fences are to be closed.
Lack of Site Security, environmental and social safeguards at Lauli'i Primary School	No security, environmental or social safeguards have been implemented at the Lauli'i Primary School quarry.	Contractor instructed to implement safeguards and security processes at the Primary School quarry including but not limited to fencing off the quarry face and providing an ablution block at the site. The only safety precautions are a few warning signs placed around site. Often these are not in Samoan.
Working adjacent to and over water	Poor implementation of safeguards when working adjacent to and over water.	Training undertaken for Health and Safety in relation to working adjacent to and over water. Beca are constantly reminding CHEC to use fall prevention and to wear life jackets.
Crusher site Lost time Injury (LTI #3)	A worker at the crusher site was maintaining equipment and fell 2-3m height knocking him unconscious. The worker was not employed following this incident.	This incident was not reported by CHEC, until prompted by the PMU. The incident is still not closed out by the Contractor, initial report has been provided.
Port Site Lost Time Injury (LTI #4)	A site engineer was off work for two days due to sore eyes due to watching welding by the workers.	CHEC have been asked to report on the incident, preliminary report has been made available.
Illegal disposal of waste material from the Port work-site	Waste material from the Port worksite including material contaminated by hydrocarbons, steel and concrete/cement waste has been disposed of to illegal fill sites in the Apia area. The number of loaded trucks leaving the Port do not correspond to the number of trucks unloading at the Tafaigata landfill.	Contractor instructed to remove waste material from illegal fill sites and dispose of to the Tafaigata landfill supported by corresponding weighbridge receipts. CHEC are not removing the illegal deposits of spoil.

These safety concerns have been identified through safety audits with the Contractor and PMU has instructed these to be actioned by the contractor via email or Engineer's Instructions.

The contractor is required to submit Near Miss and Incident Reports as and when required and includes a summary and overall safety statistics in the contractor's monthly report. CHEC have only recently recommenced the production of monthly reports follow failure to deliver

them for around eight months. The PMU continue to remind CHEC about their reporting responsibilities.

PMU continues to monitor closely and complete safety audits with the contractor to ensure safety requirements are enforced. The significant safety audit issues have been sent as an Engineer’s Instruction, instructing the contractor to remedy the safety issues. The PMU has communicated the lack of proactive actions by the contractor and the reactive nature of the contractor to the PMU’s constant and repeated notification of issues identified.

It is of note that the Contractor has not had a suitably experienced and qualified Health and Safety Manager on site during the period (now for a period of greater than two years). The ADB November mission again requested that this issue is resolved urgently suggesting that an interim solution could be to employ a suitably qualified local person. This alternative was acknowledged by the contractor. CHEC are working on a replacement, as they have been for two years.

As part of the HSP and CEMP (in accordance with PEAR and project EMP), the contractor is required to engage an approved service provider to deliver a communicable disease (STI, HIV/AIDS, COVID-19, malaria etc.) awareness and prevention program to workers and the community (ahead of construction activities commencing). Samoa Family Health Association is delivering these programmes with the first training undertaken on 19 December 2022 (refer to July – December 2022 SMR for a summary). Further training sessions are held on an irregular basis, but at a maximum of six-monthly intervals. Trainings with any new starter cohorts receiving training within 4 weeks of commencing work. The latest training occurred on 19 December 2024.



Lack of safety measures at the Lauili Primary School quarry area that is accessible by local residents Toilet facility in question at the workers accommodation,

Figure 3.1 Photos from health and safety inspections of the construction site

Incidents and Near-misses

During the reporting period, 34 incidents and near-misses were reported, three of these have been closed by CHEC. To date there have been 118 serious notifications and 81 of these remain open. The lack of closure of the issues primarily relates to the level of competency in the CHEC HSE department, and the lack of leadership without a HSE Manager.

Table 3.3: Significant health and safety events and issues

HSE	Significant events and issues	Date	Status/Remarks
HSE 085	Cofferdam Temporary Works	2 July 2024	Open.
HSE 086	Dust Compliant adjacent to Lauli'i Primary School Quarry pit	5 July 2024	Open.
HSE 087	Underage Person employed at Lauli'i Quarry	10 July 2024	Closed. EI-1394.
HSE 088	CHEC waste deposited at Lauli'i School Landfill illegally	12 July 2024	Open.
HSE 089	Inflatable Lifejackets used without CO ₂ Cannister	20 July 2024	Open.
HSE 090	Unsafe Vehicles for Transport of Staff	23 July 2024	Open.
HSE 091	Fencing missing from Fuel Compound and EPC Compound	24 July 2024	Open.
HSE 092	Worker fell from crusher at Lauli'i, CHEC did not notify	16 July 2024	Closed. EI-1461.
HSE 093	Workers using inflatable life jackets that have empty gas canisters	3 August 2024	Open.
HSE 094	Transport of Contaminated Fill to Vailele residential section	5 August 2024	Open.
HSE 095	Transport of Waste Fill to Fugalei residential section	8 August 2024	Open.
HSE 096	Failure to Control Silt Run-off to Ocean	8 August 2024	Open.
HSE 097	Unsafe scaffold erection.	9 August 2024	Open.
HSE 098	Dust Issues at Lauli'i Storage Yard	13 August 2024	Open.
HSE 099	LTI due to injury from supervising welding	24 August 2024	Open.
HSE 100	Spill of contaminants at the Lauli'i Primary School Quarry	4 September 2024	Open.
HSE 101	Safeguard issues at Lauli'i Crusher - PPE, toilets and potable water.	4 September 2024	Open.
HSE 102	Being lifted by the loader bucket to access the top of a container	4 September 2024	Open.
HSE 103	Thumb injury	6 September 2024	Open.
HSE 104	handle of the crusher hit the base of the thigh end	12 September 2024	Open.
HSE 105	Workshop Overinflated Tyre Near Miss	19 September 2024	Closed. EI-1421.
HSE 106	Oil spill from Generator used at P8 Pavement Repairs	23 September 2024	Open.
HSE 107	Sewage taken from MCR septic tanks and disposed in CHEC yard	23 September 2024	Open.
HSE 108	Workers beneath suspended load	30 September 2024	Open.
HSE 109	Noise complaint at Lauli'i School Quarry	10 September 2024	Open.
HSE 110	Disposal of waste from concrete settlement basin	7 October 2024	Open.
HSE 111	Second Overinflated Tyre Near Miss	7 November 2024	Open.
HSE 112	Uncontrolled Disposal of Waste - Vaitele-uta and Vaivase-tai	13 November 2024	Open.

HSE 113	Unsafe Scaffold - Maintenance Workshop	28 November 2024	Open.
HSE 114	Gatehouse pavement area - multiple HSE	6 December 2024	Open.
HSE 115	Discharge of silt laden water to a stormwater manhole	10 December 2024	Open.
HSE 116	HSE 116 Working at Height - Xbloc	11 December 2024	Open.
HSE 117	Welding without PPE	17 December 2024	Open.
HSE 118	Stability of Column in Shed 1	18 December 2024	Open.

4 SOCIAL SAFEGUARDS PERFORMANCE AND MONITORING

Table 4.1 below provides a summary of progress against the social safeguard requirements to date.

Table 4.1: Compliance with SPS and CSS (current reporting period)

Requirement		Compliance status	Responsibility
Social Requirements			
Inputs into social safeguards and compliance reports	SMR completed for January – June 2024; next SMR in progress	PMU	Social safeguards staff

There have been a number of social safeguards activities to note during this reporting period including the following:

- The Lauli'i quarry began operations during the 4th quarter of 2022 following receipt of PUMA's DC dated 30 August 2022. This DC expired in August 2024 and extraction activities have stopped whilst processing and storage of materials continue. The landowner and Lauli'i Village Council has requested for another 2-year extension of the DC from PUMA and is awaiting a response. CHEC reported (18 Dec 2024) that MNRE has advertised and is seeking feedback from interested parties. During their site visit, ADB requested the immediate stabilization of the area due to an active road used by the community for plantation access. They also asked for the GRM and incident registers to be present and updated daily on-site. Additionally, they noted that the containers used by workers for resting are unsafely located, being covered by processed materials that have breached the fence and spilled onto the quarry's access road. Meanwhile, Lauli'i village's arrangement with L&J as quarry operators is continuing amidst unconfirmed reports of L&J Co. being de-registered. L&J is also reported to have signed a new 5-year collaboration agreement with CHEC' during this reporting period to operate the quarry. Site stabilization and remediation has not yet commenced.
- CHEC continue earthworks activities (including extracting hard rock) at the Lauli'i Primary School Quarry site which is not covered by the Lauli'i Mountain Quarry DC but ADB requested that an application was to be submitted to PUMA by the end of December 2024. A DC is being completed but, according to the Village High Chief, documentation remains incomplete due to an overseas landowner. They have sought PUMA's views on how best to address this. During an ADB site visit, it was noted that GRM and incident registers were

absent, prompting a request for their daily updates on-site. Additionally, the extraction endpoint was unclear, leading to a request for a site plan, as current extractions reach boundaries potentially causing conflicts with landowners. ADB also requested adequate site disclosure and larger signs in relevant languages to reduce the risk to children and public access. These issues continue to be monitored from a social safeguard perspective including impacts on the school and village community (see section 6 for reported grievances), and with noise measurements taken. An update was provided to ADB about the noise complaint, but a request has been made for all details and information about the complaint to be shared with ADB immediately (see section 6 for further updates on this complaint). CHEC received a Stop Notice from the Ministry of Works, Transport and Infrastructure to cease extraction activities at this site indefinitely, dated 18 December 2024. Beca was not made known of this Stop Notice until mid-January. CHEC have confirmed that they intend to apply for a new DC for this site, which will include an updated site plan, enhanced safety measures and a remediation plan for when quarrying activities cease. The timing of this new DC application is unknown.

- In October/November 2024, CHEC were found to have been illegally dumping hazardous waste at illegal landfills in the Apia area. The Contractor has been asked to remove the illegally dumped material and dispose of it to the Tafaigata landfill. This continues to be closely monitored by the PMU.
- Concerns remain on the quality of the workers' accommodation at Olo Quarry. The PMU continue to monitor and provide recommendations to CHEC on these ongoing issues during inspections. The outdoor pit latrine facility at the Vaivase-uta accommodation has yet to be removed after discussions regarding this, and a building permit had been requested to be obtained from the Ministry of Works, Transport and Infrastructure and a written consent form from the owner of the building. A DC for the workers' accommodation is yet to be provided by CHEC. CHEC have stated that they have received an extension of the time available for quarry of rock from the quarry through to January 2025, when they should have harvested the rock that they need for the project.
- Previously reported status of sub-standard accommodation conditions for CHEC workers in Vailele-uta remain unchanged. Sub-standard conditions relate to poor sanitation (pit toilet and makeshift outside shower) and the general lack of cleanliness and hygiene in the sleeping quarters and cooking/common areas used by workers. The shelter is owned by L&J Co. and leased to CHEC. The Vailele-uta workers accommodation currently has 12 workers sharing a 3-bedroom house which has 2 toilets and 2 bathrooms. PMU discussion with L&J Co. in August agreed that the shelter will undergo refurbishing and L&J will apply for a DC from PUMA for this work. The L&J owner wasn't available to provide an update (having been recently hospitalized following an extended absence overseas). The PMU is continuing to monitor CHEC's development of its pre-cast construction yard and storage site at Vailele-uta to raise any safeguards concerns. The site is next to the Vailele-uta public cemetery. CHEC are waiting on feedback from PUMA regarding their application for rock storage yard and precast concrete operation. Community consultation instigated and facilitated by PMU was held on 4 December, with community participants unanimously opposing the proposed activities due to concerns around health and safety. Despite CHEC's submitted 'affected persons' forms showing household support after PEAR consultations, Beca expressed concerns that only the village council was involved, excluding freehold landowners. Beca believes more consultations are needed, but CHEC disagrees. Additionally, CHEC did not include their contact information in the consultation package. Further consultations are planned for February 2025. On December 18, 2024,

the Vaimauga East district MP shared community concerns with the PMU Safeguards Advisor during an impromptu meeting.

5 CONSULTATION, INFORMATION DISCLOSURE & CAPACITY BUILDING

Consultation Activities during July - December 2024

No organised or formal consultations occurred with project stakeholders during the reporting period. However, CHEC have engaged with representatives of the Vailele-uta community on 7 Dec 2024 to support their application for the proposed pre-cast/x-blocks storage site at Vailele-uta (see annex B for consultation PowerPoint and participant register). Overall, the community strongly opposed the proposed activities within their midst, a designated residential area. Main issues are health related, in particular dust, noise and vibration and traffic impacts. There were also concerns around wastewater and cement water discharge into the Fagalii Stream, with severe downstream impacts on the lagoon and coral reef which is an important livelihood source for locals. There were informal conversations carried out during a site visit with Ms Rimoni and CHEC representatives while carrying out noise measurements at the site, these are reported in November Brief Monthly Environmental Safeguards Report. No further consultation with noise complainant was held.

The PMU has regularly requested greater transparency and a record of these informal discussions with landowners.

Consultation Activities Planned for –January - June 2025

There is one pending formal consultation for social safeguards planned for the next reporting period. There continues to be ongoing issues which will require stakeholder consultation activities in the course of on-going liaison and discussion with CHEC. These include continued discussions on management of quarries and storage area impacts on neighbouring landowners, including the new potential storage site neighbouring the Vailele-Uta public cemetery. The PMU have requested that these are documented and shared so as to monitor these activities and maintain records for transparency and oversight.

Table 5.1 below provides a status update of planned construction consultations for the Project.

Table 5.1: Planned construction consultations

Consultation subject	Responsibility	Audience	Status / Timing
Quarry-related site impacts (e.g. noise, dust, traffic, safety, ownership ¹ and access, benefits)	CHEC, SPA to support	Lauli'i village and surrounds	As required in response to any complaints received or incidences of non-compliance found. The current focus remains on providing recommendations to CHEC on the situation at the Lauli'i school site and the impacts on the households adjacent to the Lauli'i quarry storage area.
Meetings with CHEC staff to familiarise them with the social protocols and code of conduct	CHEC PMU safeguards team	Meeting with all staff of CHEC before contracts are signed	As required with each new worker mobilisation. CHEC has advised that the new staff cohort has signed the code of conduct.

¹ The legal challenge on ownership of the Lauli'i Quarry land by some Lauli'i village chiefs as reported in previous SMRs was a scheduled for a hearing date in Q3 2024. There may be implications for the quarry operation if land ownership is overturned by the Court. To date, both parties have been supportive of the continued operation of the quarry. This situation will be monitored closely.

Consultation subject	Responsibility	Audience	Status / Timing
Consultation and inspection of accommodation facilities for workers	CHEC, SPA	New contract arrivals	On-going as necessary. This includes worker accommodation for Olo quarry and the new rental residence at Vaivase Uta for the Sri Lankan workers.
Vailele Uta Pre-cast site	CHEC, SPA	Vailele-uta community	CHEC supported the possibility of a second consultation meeting in February with the residents of the Vailele-uta community, after facing strong community opposition during the December consultation. This will be followed up with CHEC.

Capacity Building and Training

The following capacity building and training activities were expected to occur Q3 and Q4 (July to December) 2024. Progress to date is noted in Table 5.2 below. This table excludes wider health and safety, and environmental trainings that are noted earlier in this SMR.

Table 5.2: Capacity building and training.

Activities that were expected for Q3 and Q4 2024	Progress update:
CHEC are required to familiarise their staff with the project's social protocols and code of conduct. CHEC will run an induction for workers on requirements of the CPP, GRM and protocols established for contact between local communities and contractor/workers. This will include the signing of a Code of Conduct to be attached to all contracts.	Previous PMU requests to be invited to witness these processes remain unheeded.
Development of gender action plan and monitoring framework	The completed gender audit outlines key actions for gender action planning for SPA to progress a plan and monitoring framework. No progress to date.
Development of gender awareness training programmes for SPA/CHEC staff (gender equity, equal opportunities, gender-based violence, sexual harassment, sexual exploitation and abuse, trafficking): This programme will be developed following the gender audit.	No training to date. Next steps could involve providing gender training to SPA staff and/or setting up gender working group to assist in producing the Gender Action Plan drawing from the Gender Audit Report.
Contractor to recruit an approved service provider to deliver communicable diseases awareness and prevention programs (STIs, HIV, AIDS, and Covid-19) to both workers and community.	CHEC has completed a number of training sessions with their subcontractor, Samoa Family Heath Association. Refresher trainings occur every six months and any new staff cohorts should receive training within 4 weeks of

Activities that were expected for Q3 and Q4 2024	Progress update:
	commencing. The latest training for the new staff cohort occurred on 12 and 27 December 2024.

CHEC has also shared the following proposed training program for January to June 2025:

- January – Road traffic safety
- February – Diving operation emergency
- March – Lifting
- April – Site safety management
- May – Construction machinery and equipment safety
- June – Breakwater construction site safety

GRIEVANCE REDRESS MECHANISM

The project's Grievance Redress Mechanism (GRM) procedure, the grievance register, and the grievance complaint form template have been provided as annexes in the SMR for July – December 2021 and are used for the port, wharf and quarry sites.

Grievances Received

The following grievances were received or closed during this reporting period:

- Beca conveyed a complaint from a Lauli'i village household to PMU of an incident that happened on 16 July 2024. The incident was a physical altercation wherein the complainant was struck several times by a village matai during discussions with CHEC. The incident follows the filing of a formal complaint regarding excessive noise impacting his household. The complainant requested a private meeting in which he demanded money in exchange for withdrawing his complaint. However, Beca, PMU, CHEC and the VDC including the Village Paramount Chief agreed on no payment. This matter has been considered closed.
- PMU met with CHEC on two occasions to resolve unpaid wages and other issues regarding an ex-CHEC employee. In the first meeting, it was decided that the complainant (Ms Filoi Lavata'i) should produce a copy of her signed contract with CHEC, which she claimed contained a wage rate that CHEC didn't honour. PMU communicated this requirement to the complainant. However, she was not able to provide any signed contract and has not been heard from since. The complainant also failed to respond to the invitation to clarify their entitlements under the relevant labour laws which CHEC claimed formed the basis for her reduced final payment. PMU considers this closed.

In December 2024, PMU received a complaint from Apelu Apelu who a former CHEC employee who sustained an eye injury requiring surgery unavailable in Samoa. A request for assistance to obtain reimbursement for travel and medical expenses was made. In discussion, CHEC asserted that travel was pre-planned and not driven by the need for surgery, agreeing only to cover medical costs supported by receipts for the total of \$5000 tala. Despite PMU's efforts and additional documentation provided by complainant, CHEC has declined to reimburse the remaining expenses of \$15,000 tala. The complainant accepted CHEC's offer, and arrangements were made to finalize reimbursement, but the complainant has been unreachable. PMU and CHEC have agreed to defer concluding the issue while attempts continue to be made to contact the complainant.

6 SUMMARY AND CONCLUSIONS

A significant backlog of unresolved HSE non-compliances poses concerns due to CHEC's stated inability to address them promptly. However, there are no pressing high-risk social or environmental safeguard issues that could hinder immediate project progress.

Several critical issues demand close monitoring and immediate action by CHEC: Firstly, the ongoing neglect of worker health and safety—particularly concerning confined spaces, work at heights, and inadequate PPE—poses a risk of fatal incidents. Secondly, as noted by Beca, CHEC's challenges in recruiting personnel to meet projected levels are particularly concerning with the labour-intensive breakwater construction approaching. Additionally, opposition from the local community regarding the proposed Vailele-Uta X-block pre-cast and storage site could become an obstacle (see annex B for consultation power point and participant register). It has been recommended to hold another consultation meeting to address previously expressed community concerns.

Several of the Project's milestones have been delayed during this reporting period (and completion dates revised), due to internal factors directly under the control of the contractor. With this context, monitoring continues on a number of activities including the following which have already been mentioned:

- No quarrying has been undertaken at the Lauli'i Mountain quarry in 2024, although crushing and storage activities continue at that site. The DCA permitting this work has expired and has not yet been renewed. Environmental controls continue to be maintained and monitored at the Mountain Quarry.
- Quarrying at the Lauli'i Primary School Quarry has continued despite a lack of provision of safeguard documentation or implantation of safeguard actions. The DCA for earthworks does not authorise quarrying.
- The DCA for the Olo Quarry does not include the worker accommodation.
- No organised or formal consultations with project stakeholders took place but discussions (including relating to the Lauli'i Primary School site and Lauli'i quarry storage area) require continued monitoring.

The contractor has not had a HSE Manager on site for more than two years. A candidate has been identified by the contractor and was expected to arrive in February 2024. The PMU is pressing an interim manager to be mobilised to site.

Many efforts have been made to progress on environmental and social issues identified throughout this reporting period. However, further work needs to be done to ensure that they are addressed by the contractor in an appropriate and efficient manner.

Recommendations for follow up actions

Table 6.1 provides a list of ongoing, and follow-up actions identified in this report.

Table 6.1: Recommendations for ongoing, and follow-up actions for next reporting period

Action	Date	Responsibility
SPA to review and implement as it sees fit the recommendations in the Gender Audit Report. This may include setting up gender working group to assist in producing the Gender Action Plan within the following reporting period.	Ongoing	SPA
Monitor implementation of safeguards actions at the Lauli'i Primary School Quarry	Ongoing	PMU
Monitor for any safeguard actions associated with the development of a new rock storage site at Vailele-Uta next to a public cemetery.	Ongoing	PMU
Note expiry of Lauli'i Mountain Quarry DC in August 2024. Watching brief	Q1-Q2 2025	PMU
Inclusion of SPA-PMU in inductions for new workers – reiterate request to CHEC and inform Samoa Family Health Association	Ongoing	SPA-PMU
Audit training material, provide capacity building where required and continue to monitor content and attain acceptable quality of communicable disease awareness and prevention training for CHEC staff. Such training material needs to be gender sensitive and include relevant aspects of GBV.	Ongoing	PMU/CHEC
Continue to remind parties of expectation to keep consultation records including minutes, actions, attendance (sex dis-aggregated), venue, date and outcomes	Ongoing	SPA-PMU
Continue to monitor quality of workers' accommodation and provide recommendations to CHEC	Ongoing	PMU
Monitor public perceptions of the Project and keep SPA management informed.	Ongoing	SPA-PMU
Complete outstanding environmental audit actions for compliance with Port operations. These matters remain unchanged from previous SMRs.	Ongoing	SPA
Encourage the contractor to fill the outstanding Community Liaison Officer (CLO) position.	Ongoing	CHEC
Monitor and enforce safety actions identified through safety audit.	Ongoing	PMU
Encourage the contractor to employ and mobilise a suitably qualified Health and Safety Manager.	Ongoing	CHEC

Annex A: Project and Reporting Context

Project Background

Samoa comprises the islands of Upolu, Savai'i, Manono and Apolima in the South Pacific Ocean, together with all other adjacent islands, and lying between the 13th and 15th degrees of south latitude and the 171st and 173rd degrees of longitude west of Greenwich. The total land area is 2,831 square kilometres with a 2016 population of 192,126 split 77% and 23% between Upolu and Savai'i islands respectively.

The city of Apia is the commercial and political centre of Samoa and is the location of its main international maritime port. The 2016 population was 35,744, comprising of 5,929 households, with a male/female split of 50.25% and 49.8% respectively. The Apia Urban Area comprises of 58 villages and sub-villages located to the east, west and south of the Apia port. Land within the Apia Urban Area immediately surrounding the Apia port is mainly freehold and Government owned, with small pockets of customary land owned by two villages – Apia and Matautu. The port serves nearly 100% of Samoa's international trade and accounts for 90% of Samoa Ports Authority's (SPA) revenue. It provides a base for passenger and freight movement via international and coastal vessels. Operational characteristics include acceptable dwelling times for ships in port, occasional queuing of vessels, and limited operation times. At present there are around 150 vessels operating out of the harbour every day. It is estimated that additional capacity that caters to 100 vessels per day would be required to support the urban centre development.

The Government of Samoa (the government) requested assistance from the Asian Development Bank (ADB) to upgrade the infrastructure and operations at the Apia port (see Figure A.1 for aerial image of Port). The Enhancing Safety, Security and Sustainability of Apia Port (the Project) will improve efficiency, safety, and environmental sustainability of seaport in Apia, Samoa (the Port). It will upgrade terminal infrastructure to enhance safety and capacity, strengthen the existing breakwater to enhance resilience to climate change and severe storms, and construct a customs facility with a new container X-ray scanner to facilitate effective border management. The project will also support green port initiatives (GPI) to promote clean and sustainable port operations and management, and which are gender sensitive.

Institutional arrangements

The SPA and Ministry of Customs and Revenue (MCR) are the project's implementing agencies, and the Ministry of Finance (MOF) is the executing agency. The SPA has established a project management unit (PMU) which includes a construction supervision consultant engaged on 8th February 2021. In terms of safeguards support, the PMU includes both national and international social, environmental, and gender specialists.

The civil works contractor — China Harbour Engineering Company (CHEC) — was awarded the construction contract on 29th March 2021. They have employed a community liaison officer (CLO) and an environmental health and safety officer (EHSO) from Think Environment Consult who are developing the CEMP and EIA. For the EIA consultation, CHEC have employed a consultant from INSPIRE Consult, who has been organising and undertaking the Quarry consultations for the project.

Project Description

The Project impact will be to improve safety, security and competitiveness of trade and maritime services; and environmentally sustainable, energy efficient, and socially responsible transport sector. The outcome will be efficiency, safety and environmental sustainability of Apia International Port improved. The project includes the following outputs:

- Output 1: Safety and capacity of port infrastructure enhanced
- Output 2: Resilience and preparedness of port operations to climate change and natural hazards enhanced
- Output 3: Border security and trade facilitation capacity enhanced; and
- Output 4: Gender sensitive GPIs piloted.

The project is estimated to cost USD\$74.16 million. The Enhancing Safety, Security and Sustainability of Apia Port (the project) civil works contract was awarded to CHEC, on the 29 March 2021. The construction supervision contract was awarded on the 8 November 2020 and signed on 8 February 2021. The project civil works contract commenced on the 16 August 2021 with a duration of 730 days.

The scope of the works under output 1 (in brief) include:

- Reconstruction of the breakwater
- Installation of aids to navigation
- New pavements and repairs to existing pavements and storm water drainage
- New buildings and upgrading to existing buildings
- New and repaired/rehabilitated services provision across the port (electricity, water, parking etc.)
- New area lighting across the container storage area
- A section of wharf deck replacement and minor fencing works
- Ancillary works in the terminal:
- Recladding the existing Shed 2 to convert it to a devanning facility
- Design and construction of an equipment maintenance workshop
- Demolition of a section of Shed 1, modifications, new cladding to the wall
- Design and construction of a building to house an X-ray scanner
- Design and construction of a Customs inspection shelter.

Figure A.1: Satellite view of existing Apia Port



The areas included in the scope of works are shown in Figure A.2, Figure A.3 and Figure A.4 below. A second site is leased by CHEC at Lauli'i to develop a quarry for the required rock. The rock has been tested in New Zealand and has shown it meets the project strength and

density requirements. The contractor has worked with the PMU for the community and stakeholder consultations (as part of the environmental assessment process) to enable the DC to be applied for and subsequently granted.

DC 194-22 has been issued and includes conditions that are required to be complied with. Condition 9 includes compliance with the “comments/recommendations and mitigation measures” of the referral reports from MNRE, LTA and MCIL.

Figure A.2. Layout of main works at Apia Port

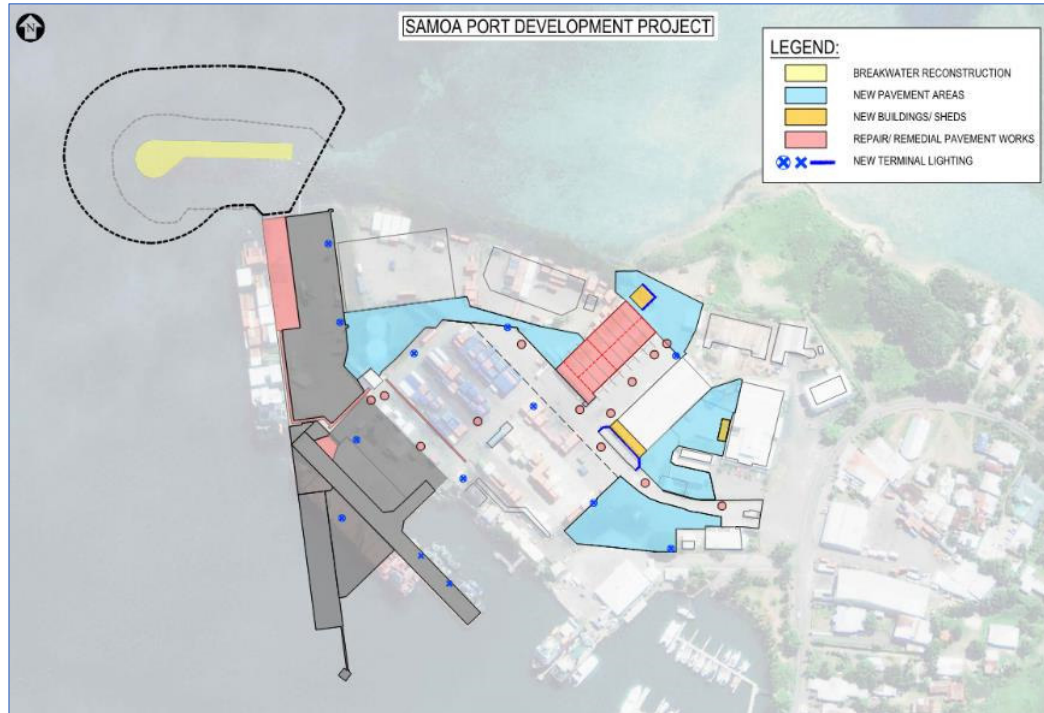


Figure A.3. Layout of temporary works at Apia Port

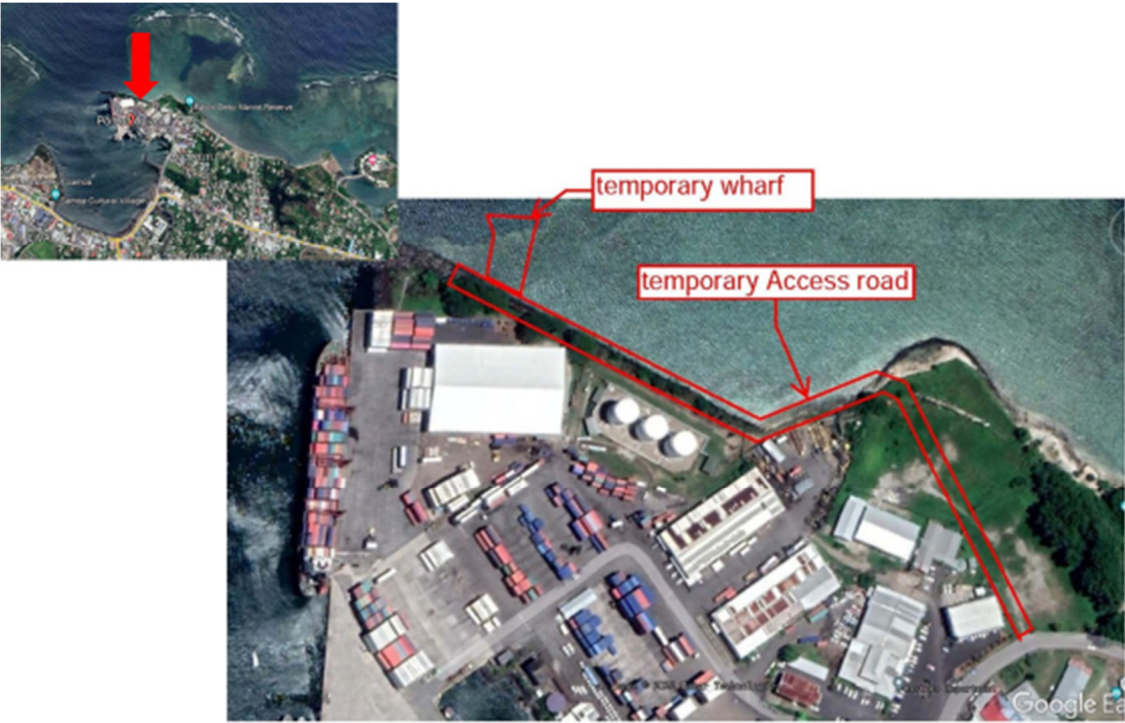
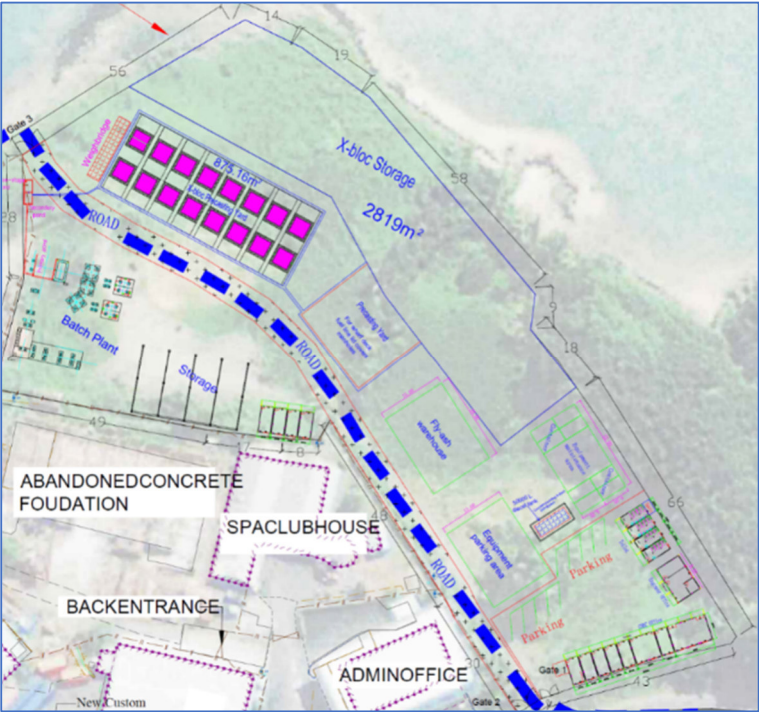


Figure A.4: Location and layout of CHEC's compound and batch plant at the Port



Key Project Milestones (updated)

Item	Date
ADB Board project approval	09-Sep-19
Declaration of project effectivity	18-Oct-19
MWTI – PUMA approved and issued development consent	29-Oct-19
Contract for the Apia Green Port component of the project signed with Royal Haskoning DHV	18-Nov-20
Construction Supervision Consultant contract awarded to Beca International	8-Nov-20
Contract for Construction Supervision Consultant signed	08-Feb-21
Letter of Acceptance for CHEC	29-Mar-21
Civil works contract signed with CHEC	29-Mar-21
Commencement Date of CHEC's mobilisation for civil works	16-Aug-21
Commencement date – Section 1 – X-Ray building	16-Aug-21
Commencement date – Section 2 – remaining terminal works	16-Aug-21
Commencement Date – Section 3 – breakwater reconstruction	16-Aug-21
Original completion date of Section 1	12-Feb-22
Original completion date of Section 2	16-Aug-22
Revised Contract completion date for Section 1	31-Aug-23
Revised Contract completion date for Section 2	31-Dec-24
Contractual completion date of construction project	31-Dec-24
Original completion date of Section 3	16-Aug-23
Revised Contract completion date for Section 3	5-Nov-23
Contractor's estimated completion date of Section 1	April 2025
Contractor's estimated completion date of Section 2	June 2025
Contractor's estimated completion date of Section 3	December 2026
Contractor's estimated completion date of construction project	December 2026

Annex B: Training & Consultation material

Annex C: Vailele-uta storage & precast site