



ATA FAATAITAI

PULEGA O UAFU MA TAULAGA



**RIPOTI FAALETAUSAGA
TAUSAGA FAAIUINA 30 IUNI 2017**

TOFA MAMAO

"IA AVEA MA TAIALA I LE PASEFIKA I AUAUNAGA LELEI"

ANAVATAU

"IA ATINAE MA FAATUMAUINA PEA LE LELEI O UAFU MA TAULAGA"

- **Ina ia o gatasi ma manaoga ma taiala mo le tamaoaiga ma le soifua lelei**
- **Ofoina atu o se auaunaga saogalemu, malu puipuia lelei, atoatoa le lelei, faamoemoeina ma e ausia ni tupe faasili.**
- **Tausisia ma mulimulitaia tulafono ma taiala faavaomalo"**

FAASINO TUSI

Faamatalaga mo le Palemene	4
Faamatalaga mo le Minisita	5
Komiti Faatonu	6
Ripoti ale Taitaifono	7-8
Ripoti ale Pule Sili	9-11
Atinae Tetele	12-14
<i>Faatulaga o Tofiga</i>	15
<i>Ripoti O Tupe</i>	16
<i>Faamaonina mai le Faatonu</i>	18-20
<i>Ripoti ale Suetusi Sili</i>	21-22
<i>Faamatalaga o Paleni O meatotino, Aitalafu ma Tupe Faavae</i>	23-24
<i>Faamatalaga o Tupe Maua ma Tupe Faaalu</i>	25
<i>Faamatalaga o Fesuaiga o Tupe Faavae</i>	26
<i>Faamatalaga o Tupe Galue</i>	27
<i>Faamatalaga e avea ma vaega o Ripoti o Tupe</i>	28-36
<i>Fuainumera Faamauina o Galuega Faatino i luga ole Uafu</i>	37-44



OFFICE OF THE MINISTER

MINISTRY OF WORKS, TRANSPORT AND INFRASTRUCTURE

(ELECTRIC POWER CORPORATION, SAMOA WATER AUTHORITY, SAMOA AIRPORT AUTHORITY, SAMOA PORTS AUTHORITY,
SAMOA SHIPPING CORPORATION, TRANSPORT CONTROL BOARD, HOUSING COMMITTEE)

RIPOTI MO LE PALEMENE

Hon. Toleafoa Le'aupepe Faafisi
Fofoga Fetalai o le Maota
Palemene o Samoa
TUANAIMATO

Lau Afioga I le Fofoga Fetalai

Ina ia tusa ai ma le Vaega 35 (2) o le Tulafono o Uafu ma Taulaga 1998, e ia te au le faaalalo tele e tuuina atu ai I luma o le Maota le Ripoti Faaletausaga o loo aofia ai ma Ripoti o Tupe ua maea sueina faasuetusi a le Pulega o Uafu ma Taulaga mo le tausaga faaletupe na faaiuina I le aso 30 Iuni 2017.

I le agaga faagaafia e tuuina atu ai se ripoti ini matatia na ausia e le Pulega mo le tausaga faaletupe lona 18 lenei amata mai I le aso 01 Iulai 2016 faamaeaina I le aso 30 Iuni 2017.

Na faamauina Tupe Maua a le Pulega e \$18,318,532 ao Tupe Faaalu e \$7,749,210 e le aofia ai Tupe Faaalu fua faatatauina e toese mai le aoga o meatotino (depreciation) e \$3,583,940.

O le aofai o le Tupe Faasili na faamauina se aofai maoae e \$6,985,382 ao le aofai o Meatotino faamauina e \$202,838,967.

Faamauina I lalo nisi o galuega tetele na faatinoina I le tausaga faaletupe o loo lauliliuina nei:

- Valitaina o le paka o taavale
- Suesuega na faatinoina I le Uafu I Asau
- Faaleleia ma le faapipiina o vaega moomia mo le faapipiina o Vaa I le uafu
- Faaopopoina o vaega moomia o le eletise mo pusacaisa I luga o le uafu
- Faapipiina o Pole mo le tauina o Vaa laukesi
- Faaleleia o le nofoaga teu ai pusaoloo
- Faaauuina o le galuega faaleleia ma le faalauteleina o le Uafu
- Faapipiina o Vaega mo Fuimu (Fire Hydrants) I luga o le Uafu

E momoli atu le faamalo ma le faafetai I le Komiti Faatonu, Pulega ma le Auaigaluega mo le ausia o Tupe Faasili maoae mo lenei tausaga faaletupe ua faaiuna.


Papaliitele Unasa Niko Lee Hang

MINISTER OF WORKS, TRANSPORT AND INFRASTRUCTURE



PULEGA O UAFU MA TAULAGA – FAAMATALAGA MO LE MINISITA

31 Oketopa 2017

Hon. Papali'i Unasa Niko Lee Hang
Minisita o Galuega, Felauaiga ma Galuega Tetele
APIA

Lau Afioga I le Minisita,

“RIPOTI FAALETAUSAGA MA RIPOTI O TUPE MAEA SUEINA – 30 IUNI 2017”

Ina ia tausisia le Vaega 35 (1) a, b ,c, o le Tulafono o Uafu ma Taulaga 1998, e tuuina atu ai le Ripoti Faaletausaga o loo aofia ai Ripoti o Tupe ua maea sueina mo le tausaga faaletupe na faaiuina I le aso 30 iuni 2017.

O loo aofia I le Ripoti vaega nei:

- (a) Ripoti a le Taitaifono
- (e) Ripoti a le Pule Sili
- (i) Ripoti a le Suetusi Sili
- (o) Faamaoniga mai Faatonu
- (u) Ripoti o Tupe maea sueina mo le tausaga faaiuina 30 Iuni 2017.
- (f) Fuainumera Faamauina o Galuega Faatinoina I luga o uafu.

Ma le faaaloalo tele lava.

So'alo Kuresa SO'OALO
PULE SILI

KOMITI FAATONU – 2016/2017

☐	Rev. Elisaia Fiu Kolia	-	Taitaifono
☐	Luafau Lei'a Tu'ulima Aima'asu	-	Faatonu
☐	Tuatagaloa Shane Joseph Wulf	-	Faatonu
☐	Taua Paul Phillips	-	Faatonu
☐	Afoa Raymond Pereira	-	Faatonu
☐	Pisaina Leilua-Lei Sam	-	Faatonu
☐	Rev. Nu'uausala Siasosi Siutaia	-	Faatonu (tofia Ianuari 2017)
☐	Capt. George Clarke	-	Faatonu (faamavae Setema 2016)



Nonofo (L-R): Tuatagaloa Shane Wulf, Luafau Lei'a Tu'ulima Aima'asu, Rev. Nu'uausala Siasosi Siutaia, Rev. Elisaia Fiu Kolia (Chairman), Pisaina Leilua-Lei Sam, Afoa Raymond Pereira

E leo auai: Taua Paul Phillips, So'oalo Kuresa So'oalo (Pule Sili / Failautusi)



RIPOTI ALE TAITAIFONO

O le maea ai o le tausaga faaletupe 2016/2017, ua atoa ai le sefuluvalu tausaga talu ona faavae le auunaga a le Pulega o Uafu ma Taulaga. I nei tausaga o loo feagai pea le Pulega ma luitau ina ia taumafai atili pea e faaleleia le faaiuga o galuega tautupe faatusa atu I tausaga ua tuanai

Tulaga Tautupe a le Pulega

Na ausia se tulaga maoae I le faaiuga o galuega tautupe a le Pulega e tusa ai ma faamaumauga ma ua atagia ai le tulaga aputiputi ma le mataituina lelei o le faatinoga o galuega a le Pulega.

O Tupe Maua na faamauina pe tusa ma le \$18,318,532, o se siitaga I le aofai e \$2,015,585 pe tusa ma le 12.36 pasene faatusa atu I le tausaga ua tuanai. Na faamauina Tupe Faaalu pe tusa ma le \$11,333,150, pe tusa ma le 18 pasene e maualalo ai nai lo le aofai na faamauina I le 2016. O Tupe Maua mai auunaga faatino na siitia I le 12 pasene faatusa atu I le tausaga ua tuanai e ui I le toe faamatuueseina atu o avanoa na faamaonia mo vaa tetele ma meli lau pasese ona o galuega faaleleia o loo feagai ma le uafu I Apia.

Na faamauina le siitia o paleni o Tupe faavae mai le \$132.2 miliona I le 2016 I le \$138.2 I le 2017. O le aofai o meatotino tetele (fixed assets) na faaititia mai le \$196.2 miliona I le 2016 I le \$193.2 miliona I le 2017, na mafua lea ona o le aveeseina o nisi o masini tetele e leo toe aoga mai le tuuaofaiga o meatotino.

O loo faaauau pea ona galulue faatasi le Komiti Faatonu, Pulega ma le Afaigaluega ina ia mautinoa le malu puiquia pea o meatotino ma punaoa o loo taufasoasoa ina ia mautinoa le faaauauina pea ona ofoina atu le auunaga I se tulaga maualuga ma le atoatoa ma ia tapuaaoina lelei foi tupe maua a le Pulega ina ia ausia tupe faasili ma ni faaiuga lelei mo le Pulega.

Otootoga o Vaega Tetele

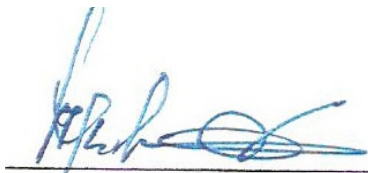
- O le tofiaina o le Pule Sili le Afioga ia Aiganala'avasa Uialatea Asofa Fereti lea sa ia umia le tofiga mo nao le tasi le tausaga ma nai masina ona o gasegase na feagai ma ia. Na ia faamavae mai le tofiga I le masina o Aukuso ae tuua le malo ia le masina o Setema.
- O le Atinae o le toe faalateleina o le uafu I Apia I lalo o le fesoasoani a Iapani, o loo sologa lelei pea faamoemoe e faamaeaina I le masina o Iuni 2018.

- O le kamupani o le Huanan Fishing Company o loo faaauau pea ona faalauteleina lana auunaga I luga o le uafu ma o loo iai le faamoemoe mo le fausiaina o se fale pusa aisa mo le teuina o ia.
- O le kamupani o le Uaea mo Fesootaiga (Samoa Submarine Cable company) o loo faamoemoe e fausiaina se fale mo le teuina o le uaea mo fesootaiga I luga o le uafu I Apia.
- O le Fuafuaga mo le Puleaina o Meatotino (Asset Management Plan) o lo ua faagasoloina nei ma le manatu autu ina ia malu puipuia ma puleaina lelei meatotino a le Pulega.
- Suesueina o Lisi o Fanua a le Pulega ina ia mautinoa o loo sao faamaumauga ma le aofai o totogi o fanua o loo lisiina.
- Faaauau ona tuuina atu se auunaga saogalemu, atoatoa ma faatuatua ina ia fai sao uma I le atinae o le tamaoaiga o Samoa.
- Atinae mo le Faaleleia atili o le Taulaga I Apia I lalo o le fesoasoani a le Faletupe o le Atinae o Asia fuafuaina e amata I le masina o Iulai 2017

Upu Faaiu

O le faaiuga o galuega o leni tausaga faaletupe ma le ausia o Tupe Faasili maoae e \$6,985,382 e le Pulega o se mata-tia maualuga faatusa atu I le tausaga ua tuana'i. Afai e maea le Atinae o le faalauteleina o le Uafu I Apia faamoemoe mo le masina o Iuni 2017, e manatu le Komiti Faatonu ma le Pulega e tatau ona faatupulaia tupe maua ma ose tulaga lelei lea mo le mautinoa o le sologa lelei o le faatinoga o galuega a le Pulega I tausaga oi luma.

I lou tulaga o le Taitaifono, out e momoli atu le faafetai tele I le Komiti Faatonu mo lo outou sao taua I le atinae a le Pule o Uafu ma Taulaga I leni tausaga faaletupe ua maea. Momoli atu foi le agaga faafetai tele I le Pulega ma le Auaigaluega mo galuega lelei uma na faatino ao faagasolo le lona 18 leni o tausaga o le auunaga a le Pulega.



Rev. Elisaia Fiu Kolia

TAITAIFONO

RIPOTI A LE PULE SILI

I le agaga faagaetia ma le fiafia e tuuina atu se oototoga o le iuga o galuega a le Pulega o Uafu ma Taulaga mo le tausaga faaletupe na faaiuina I le aso 30 Iuni 2017. Na faavaeina le Pulega o Taulaga ma Uafu I lalo o le Tulafono o Uafu ma Taulaga 1998 ina ia faatino le auauunaga faapisinisi ina ia gafatia lava e le Pulega ona faatupe ana ia lava auauunaga, ma ia mautinoa le saogalemua o uafu ma ausia manaoga uma faalegataifale I se tulaga atoatoa ma le tali atu I se taimi vave.

O le tausaga faaletupe na faaiuina nei, ua atoa iai le sefuluvalu tausaga o le auauunaga a le Pulega ma ua faamauina o se tausaga maoae I le tulaga tautupe e pei ona iai se Tupe Faasili pe tusa ma le \$6.9 miliona tala. O se tasi o matatia iloga mo lena tausaga e pei ona iai le atinae o le faalauteleina o le uafu I Apia I lalo o se fesoasoani mai le Malo o Iapani faamoemoe e faamaeaina ia Iuni 2018.

Oototoga o Galuega Faatino

- Faamauina le siitia o le aofai o Vaa na asia le uafu I Apia I le 11 pasene mai le 472 I le 2016 I le 528 I le 2017. O le aofai o uta na lauina I Apia na faaititia I le 1.7 pasene.
- E 14 Vaa mo e Tafafao na asiasi mai I le 2017 faatusa atu I le 16 I le tausaga ua mavae ona o le aafiaga mai le atinae o loo fatino I le taimi nei mo le faalauteleina o le uafu. O nisi o Vaa Tafafao na faamoemoe e Malaga mai ua toe fetuunai atu le taimi sei maea le atinae faamoemoe e faamaeaina ia Iuni 2018.
- O loo unaina pea e le Pulega le faaogaina o Pole mo le taulaina o Vaa o loo I isi nofoaga I Upolu ma Savaii e pei o Sinalei I Siumu, ma le La Goto I Fagamalo Savaii.
- O le faalauteleina ma le faalolotoina o le ava I Asau o loo iloiloina nei ma tau fetuunai ni auuala e mafai ona faaogaina ai lena uafu aemaise o se atinae e mafai ona faatinoina I luga o lena uafu e fesoasoani I le tamaoaiga o le motu I Salafai ma fesoasoani I tupe maua a le Pulega.
- Na faamauina le siitia o pasese I le va o Samoa ma Amerika Samoa mai le 8,691 I le 2016 I le 11,466 I le 2017, faapea ona siitia uta felauai e pei ona faamauina le aofai e 448 tone I le 2016 faatusa atu I le 531 tone I le tausaga nei.
- Na faamauina foi le siitia o pasese I le va o Samoa ma Tokelau mai le 2,711 I le 2016 I le 3,618 I le 2017 ma le mamafa o uta na felauai na siitia mai le 4,571 tone I le 6,993 tone I le 2017.

Ripoti o Tupe

Na faamauina Tupe Maua mo le tausaga e \$18,318,532 ao Tupe Faaalu e \$7,749,210 e lei aofia ai le aofai faatatau mo le aoga o meatotino (depreciation) e \$3,583,940. O Tupe Faasili na ausia se matatia e \$6,985,382 ina ua maea toese le aofai fatatauina mo le aoga o meatotino ae o le aofai o Meatotino na faamauina e \$202,838,967

Atinae Tetele

O le Atinae mo le faalauteleina ma le faaleleia o le saogalemu o le Uafu I Apia lea na amatalia I le masina o Setema 2016 faatinoina e le kamupani mai Iapani o le Wakachiku Constructions Company Ltd faatupeina I lalo o le polokalame fesoasoani a le Malo o Iapani

O isi atinae na faatinoina e aofia ai::

- Valitaina o le paka o taavale
- Suesuega na faatinoina I le Uafu I Asau
- Faaleleia ma le faapipiina o vaega moomia mo le faapipiina o Vaa I le uafu
- Faaopopoina o vaega moomia o le eletise mo pusaaisa I luga o le uafu
- Faapipiina o Pole mo le tauina o Vaa laukesi
- Faaleleia o le nofoaga teu ai pusaoloo
- Faaauuina o le galuega faaleleia ma le faalauteleina o le Uafu
- Faapipiina o Vaega mo Fuimu (Fire Hydrants) I luga o le Uafu

Tagata Faigaluega

E 110 le aofai o le aufaigaluega a le Pulega o loo iai nei ma sa ave le faamuamua I le atinae o tagata faigaluega e ala I le ofoina atu o aoga faaauu I Samoa nei ma atunuu mamao.

O le Taiala ma Faigafaavae mo le Aufaigaluega I Iona Vaega 4 (Employment Policy Version V4) na taliaina e le Komiti Faatonu I lana fonotaga o le aso 30 Me 2017. O le autu tonu o lenei Taiala ina ia maua e le aufaigaluega uma faasinomaga mo le puleaina lelei o tagata faigaluega ma ia manino foi tulafono ma faiga faavae aemaise o faamanuiaga e agavaa iai tagata faigaluega.

Saafiafiga

E manatua le sao taua o le Afioga ia Aiganalaavasa Asofa Fereti o le sa avea ma Pule Sili ae na faamutaina lana auaunaga ina ua faamavae ona o le le atoa o le soifua maloloina. Mapu atu ia le agaga o lana auauna I le Lagi e faavavau.

Atinae mo le Lumanai

I le faamoemoe e faamaeaina ai le atinae o le faalauteleina o le uafu I Apia I le masina o Iuni 2018, ua iai foi fuafuaga faataoto mo nisi galuega I luga o le uafu I Apia faatasi ma isi uafu e pei:

- Faaauauina o le Atinae faaleleia o uafu ma taulaga I lalo o le polokalame a le Faletupe o Atinae o Asia.
- Toe atinaeina o uafu I Asau ma Aleipata.
- Faatauina mai o se Vaa mo Pailate
- Fale Tele mo le Kamupani o Uaea mo fesootaiga (TE Subcom)
- Fausiaina o se Fale Pusa Aisa mo le kamupani o le Huanan Fishery company
- Faatinoina ma faaogaina o le auunaga fou faakomepiuta mo le faamauina o uta

Upu Faaiu

O se tausaga faaletupe maoae lenei mo le Pulega, ma I le ausia ai o se matatia I Tupe Faasili e pei ona faamauina ai le aofai e \$6.9 miliona o se famaoniga mautu lea o le galuega lelei ma le tuu atoa iai sa faatinoina e le Malo e ala mai I le Afioga I le Minisita o Galuega, Felauaiga ma Atinae Tetele, le Taitaifono ma le Komiti Faatonu, le Pulega ma le Auaigaluega.


Faafetai

E faamauina le faafetai I le lagolago faifaipea a le Malo o Samoa e tauala mai I le Afioga I le Minisita ia Papaliitele Unasa Niko Lee Hang, aemaise o le sao taua o paaga faapisinisi a le Pulega ma I latou uma o loo faaogaina le auunaga a le Pulega o Uafu ma Taulaga.

Muliaci ai ae le ititi ai le taua, e momoli le faafetai tele le galuega tele sa feagai ai ma le Taitaifono ma le Komiti, le Pulega ma le auaigaluega, faamoemoe atu mo la outou lagolago faaauau mo le tausaga faaletupe ua amataina nei.

IA MAUA E OUTOU UMA MA O OUTUA AIGA SE KERISIMASI MANUIA MA SE TAUSAGA FOU FIAFIA.

Ma le faaaloalo tele lava



So'oalo Kuresa SO'OALO

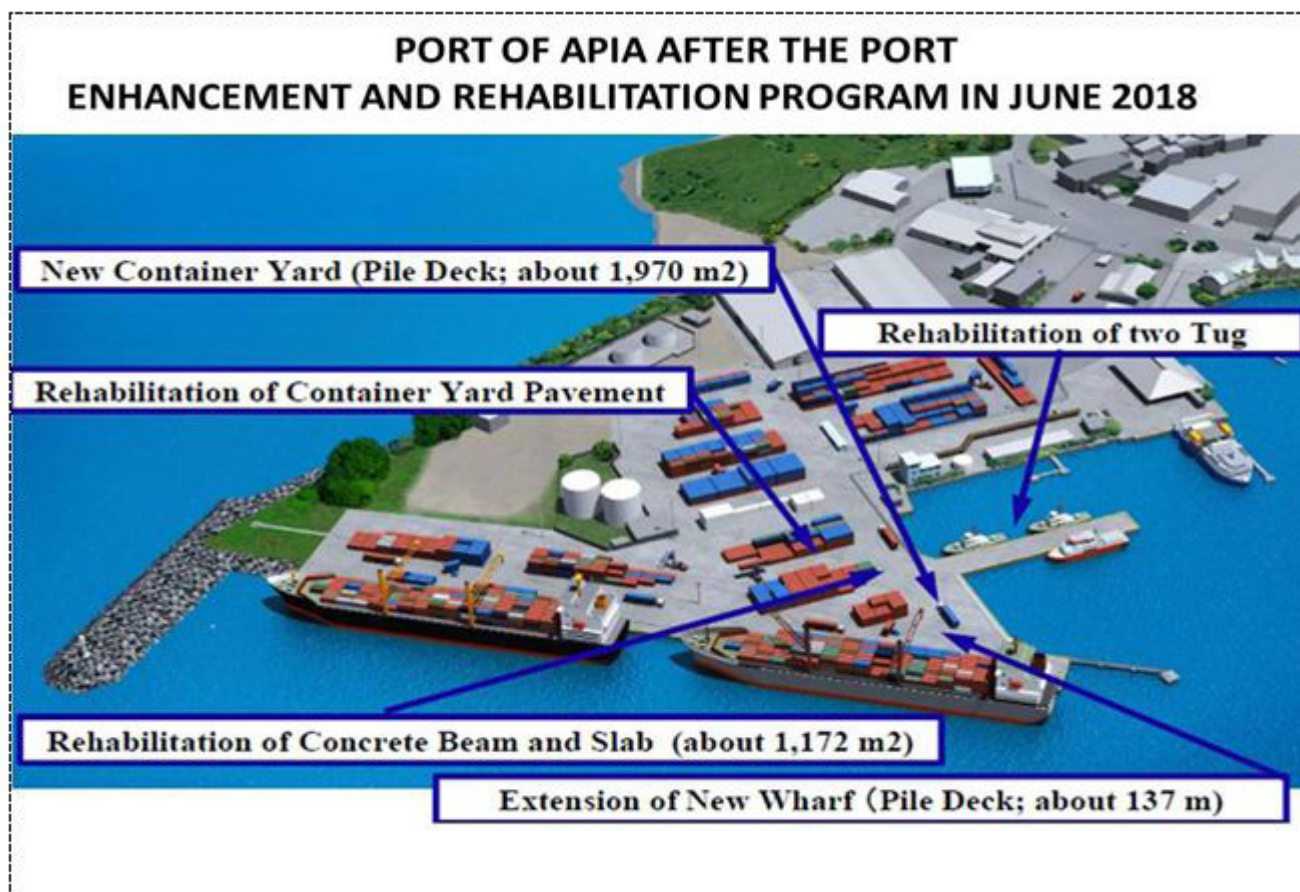
PULE SILI

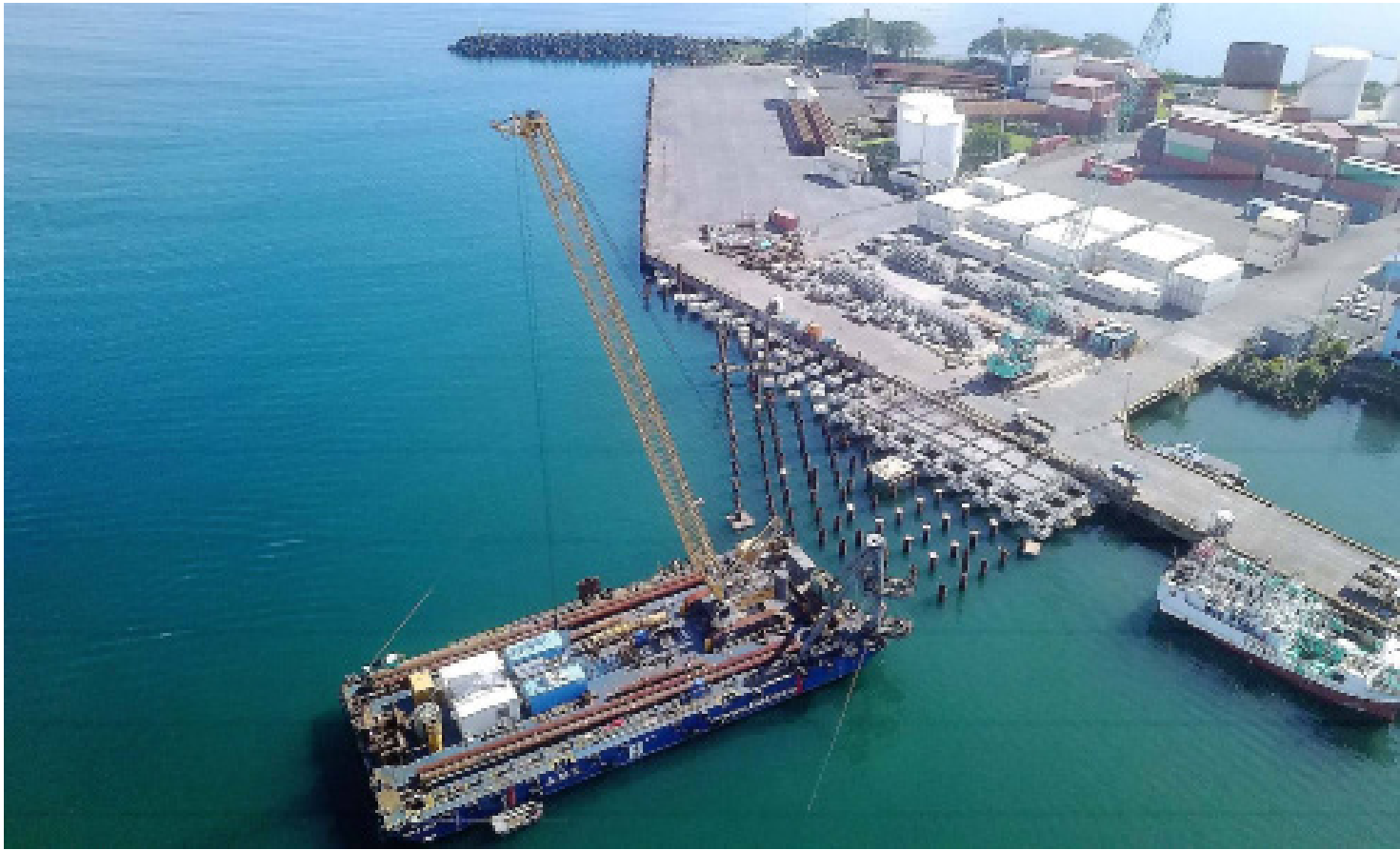
ATINAE TETELE O LOO FAATINOINA

O le Atinae mo le faalauteleina o le uafu I Apia I lalo o se fesoasoani a le Malo o Iapani o loo faagasolo lelei lava fuafuaina e faamaeaina I le masina o Iuni 2018. O loo aafia I lenei Atinae le faateleina o le vaega e taula ai Vaa, faapopoina o le vaega e teu ai pusa oloa, o le fausiaina o vaega e nonoa iai maea o Vaa, aemaise galuega toe faaleleia o Vaa Toso Vaa e lua. O loo sosoo atu I lalo ni ata o se foliga vacia o le galuega pea maea..

O isi ata o loo faaalua ai le tulaga tonu ua oo iai le galuega aemaise o se tulaga maualuga o le iai le uafu pea maea lelei lenei galuega teles.

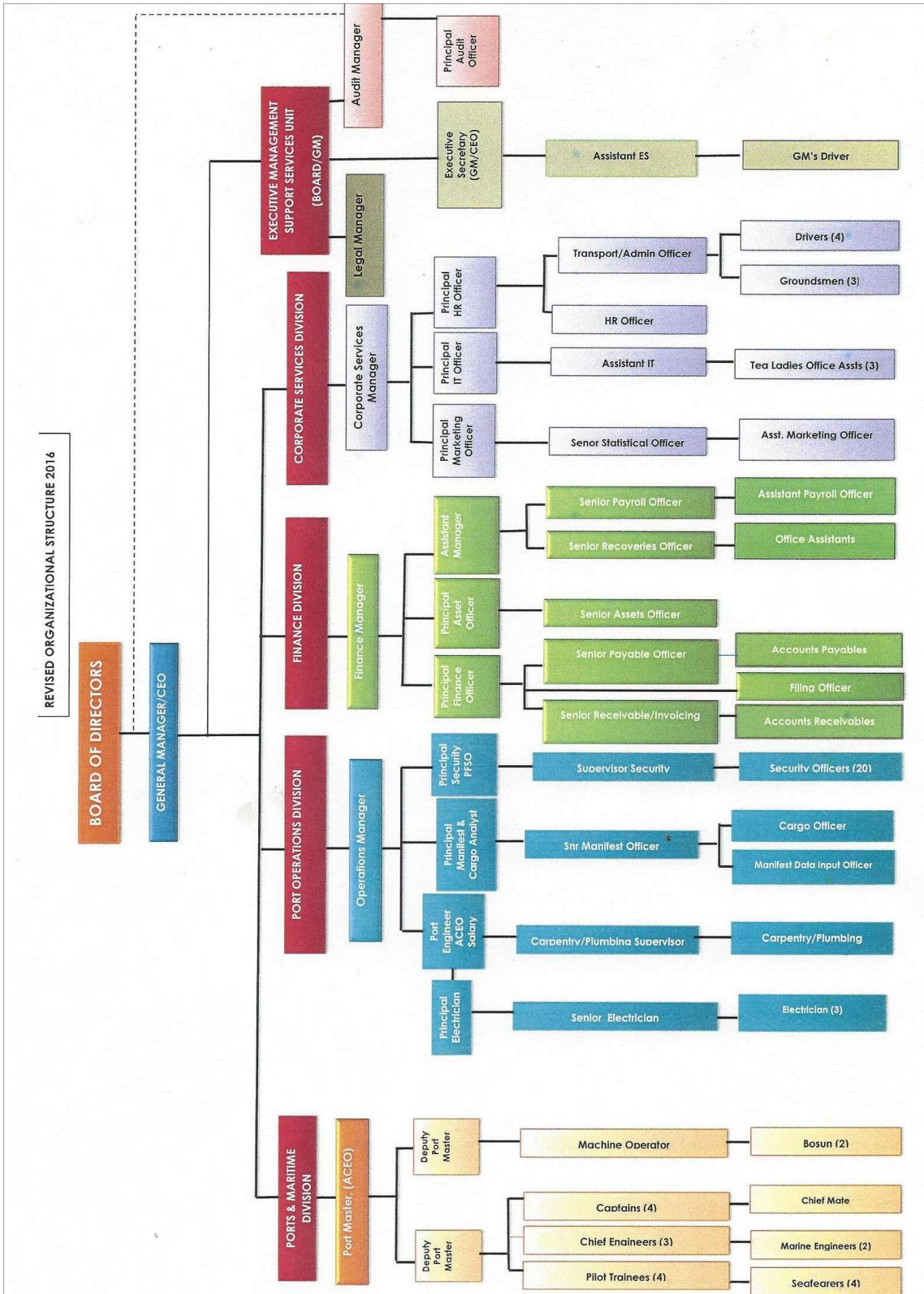
Atinae Faaleleia mo le saogalemu o le Uafu Faavaomalo I Apia.







FAATULAGAINA O TOFIGA



RIPOTI O TUPE

FAASINO TUSI

Faamaoniga mai Faatonu	18-20
Repoti ale Suetusi Sili	21-22
Faamatalaga o Paleni Meatotino, Aitalafu ma Tupe Faavae	23-24
Faamatalaga o Tupe maua ma Tupe Faaalu	25
Faamatalaga o le Fesuiaiga o Paleni o Tupe Faavae	26
Faamatalaga o Tupe Galue	27
Faamatalaga e avea ma vaega o Ripoti o Tupe	28-36

PULEGA O UAFU MA TAULAGA FAAMAONIGA MAI FAATONU



**PULEGA O UAFU MA TAULAGA
FAAMAONIGA MAI FAATONU
MO LE TAUSAGA FAAIUINA 30 IUNI 2017**

E tuuina atu leni faamaoniga e faapea: o Ripoti o Tupe a le Pulega o Uafu ma Taulaga o loo faapipiina atu iinei e aofia ai Faamatalaga o Paleni o Meatotino, Aitalafu ma Tupe Faavae, Faamatalaga o Tupe Maua ma Tupe Faaalu, Faamatalaga o le Fesuiaiga o Paleni o Tupe Faavae, Faamatalaga o Tupe Galue, ma Faamatalaga e avea ma vaega o Ripoti o Tupe mo le tausaga faaletupe na faaiuina i le aso 30 Iuni 2017;

- a) tuuina atu i se tulaga sao ma le paleni tutusa o vaega uma o loo faasino iai ;
- b) sa tapenaina ma mulimulitaia Taiala Faavaomalo mo Ripoti o Tupe ma;
- c) o loo tausisia vaega o le Tulafono mo le Pulecina o Tupe a le Malo 2001 ma le Tulafono mo Kamupani Tumaoti 2001 (toe iloiloina 2006) e tusa ma vaega mo Ripoti o Tupe o loo i lalo o le Tulafono o le Pulecina o Tupe a le Malo 2001, Tulafono mo Faalapotopotoga Tumaoti a le Malo 2001 ma le Tulafono a le Pulega o Uafu ma Taulaga 1998.

Komiti Faatonu

O sui mamalu o le Komiti Faatonu mo le tausaga faaletupe ua maea nei e aofia ai;

Taitaifono	Rev. Elisaia Fiu Kolia
Faatonu	Luafau Leia Tuulima Aimaasu
Faatonu	Afoa Raymond Pereira
Faatonu	Tuatagaloa Shane J Wulf
Faatonu	Pisaina Leilua-Lei Sam
Faatonu	Taua Paul Phillips
Faatonu	Rev. Nuuausala Siasosi (tofia Ianuari 2017)
Faatonu	Capt George Clarke (faamavae Setema 2016)



Signature

Rev. Elisaia Fiu Kolia
TAITAIFONO
Pulega o Uafu ma Taulaga
Apia, Samoa
31 / 10 / 2017



Signature

Tuātagaloa Shane Wulf
FAATONU
Pulega o Uafu ma Taulaga
Apia, Samoa
31 / 10 / 2017

PULEGA O UAFU MA TAULAGA

RIPOTI ALE SUETUSI SILI





AUDIT OFFICE

Please address all correspondences
to the Controller and Auditor General

REPORT OF THE AUDIT OFFICE

TO THE GOVERNING BODY IN CHARGE OF GOVERNANCE – SAMOA PORTS AUTHORITY

Audit Opinion

We have audited the accompanying Financial Statements of the Samoa Ports Authority which comprise the Statement of Financial Position as at 30 June 2017, and Statements of Financial Performance, Changes in Equity and Cash Flows for the year then ended, and a Summary of Significant Accounting Policies and Other Explanatory Notes. The Accounting Firm of Isitolo Leota, Chartered Accountants, assisted in the audit. The Engagement Partner on the audit resulting in this Independent Auditor's Report is Tuala Pat Leota.

In our opinion, the financial statements give a true and fair view of the financial position of the Samoa Ports Authority as at 30 June 2017, and of its financial performance, changes in equity and cash flows for the year then ended, in accordance with International Financial Reporting Standards (IFRSs), Public Finance Management Act 2001, Public Bodies (Performance and Accountability) Act 2001 and the Ports Authority Act 1998.

Basis for Opinion

We conducted our audit in accordance with International Standards on Auditing (ISAs). Our responsibilities under those standards are further described in the *Auditor's Responsibilities for the Audit of the Financial Statements* section of our report. We are independent of the Samoa Ports Authority in accordance with the ethical requirements that are relevant to our audit of financial statements in Samoa, and we have fulfilled our other ethical responsibilities in accordance with these requirements. We believe that the audit evidence we have obtained is sufficient and appropriate to provide a reasonable basis for our opinion.

Responsibilities of Those Charged with Governance for the Financial Statements

Directors and Management are responsible for the preparation and fair presentation of the financial statements in accordance with International Financial Reporting Standards, Public Finance Management Act 2001, Public Bodies (Performance and Accountability) Act 2001, and the Ports Authority Act 1998 and for such internal control as directors and management determine is necessary to enable the preparation of financial statements that are free from material misstatement, whether due to fraud or error.

In preparing the financial statements, the Directors are responsible for assessing the Authority's ability to continue as a going concern, disclosing, as applicable, matters related to going concern and using the going concern basis of accounting unless Directors either intend to liquidate the Authority or to cease operations, or have no realistic alternative but to do so.

Those charged with governance are responsible for overseeing the Authority's financial reporting process.

Auditor's Responsibilities for the Audit of the Financial Statements

Our objectives are to obtain reasonable assurance about whether the financial statements as a whole are free from material misstatement whether due to fraud or error, and to issue an auditor's report that includes our opinion. Reasonable assurance is a high level of assurance, but is not a guarantee that an audit conducted in accordance with International Standards on Auditing will always detect a material misstatement when it exists. Misstatements can arise from fraud or error and are considered material if, individually or in the aggregate, they could reasonably be expected to influence the economic decisions of users taken on the basis of these financial statements.

As part of an audit in accordance with these International Standards on Auditing, we exercise professional judgment and maintain professional skepticism throughout the audit. We also:

- Identify and assess the risks of material misstatement of the financial statements whether due to fraud or error, design and perform audit procedures responsive to those risks, and obtain audit evidence that is sufficient and appropriate to provide a basis for our opinion. The risk of not detecting a

Telephone: 27751
Fax: 24167
Email: info@audit.gov.ws
Website: www.audit.gov.ws

P.O Box 13
APIA, SAMOA



AUDIT OFFICE

Please address all correspondences
to the Controller and Auditor General

material misstatement resulting from fraud is higher than for one resulting from error, as fraud may involve collusion, forgery, intentional omissions, misrepresentations, or the override of internal control.


- Obtain an understanding of internal control relevant to the audit in order to design audit procedures that are appropriate in the circumstances, but not for the purpose of expressing an opinion on the effectiveness of the Authority's internal control.
- Evaluate the appropriateness of accounting policies used and the reasonableness of accounting estimates and related disclosures made by management.
- Conclude on the appropriateness of the directors and management's use of the going concern basis of accounting and, based on the audit evidence obtained, whether a material uncertainty exists related to events or conditions that may cast significant doubt on the Authority's ability to continue as a going concern. If we conclude that material uncertainty exists, we are required to draw attention in our auditor's report to the related disclosures in the financial statements or, if such disclosures are inadequate, to modify our opinion. Our conclusions are based on the audit evidence obtained up to the date of our auditor's report. However, future events or conditions may cause the Authority to cease to continue as a going concern.
- Evaluate the overall presentation, structure and content of the financial statements, including the disclosures, and whether the financial statements represent the underlying transactions and events in a manner that achieves fair presentation.

We communicate with the Directors and Management regarding, among other matters, the significant audit findings, including any significant deficiencies in internal control that we identify during our audit.

We also provide the Directors and Management with a Statement that we have complied with relevant ethical requirements regarding independence, and to communicate with them all relationships and other matters that may reasonably be thought to bear on our independence and where applicable, related safeguards.

Our audit was completed on the 31st October 2017 and our opinion is expressed as at that date.

Apia, Samoa
31 October 2017


Fa'amatua'inau Dennis Margraff
ACTING CONTROLLER AND AUDITOR GENERAL

PULEGA O UAFU MA TAULAGA RIPOTI O TUPE FAALETAUSAGA



PULEGA O UAFU MA TAULAGA

FA'AMATALAGA O PALENI O TUPE FA'AVAE, MEATOTINO MA NOATAGA

FA'AMUTAINA ASO 30 IUNI 2017

ASETA	Fa'amatalaga	2017 SAT\$	2016 SAT\$
Aseta vave fa'aliliu-tupeina			
Tinoitupe	3	1,324,822	2,799,479
Tupe teu fa'avaitaimi	4	4,583,782	1,000,000
Fefa'atauaiga ma isi tupe maua e le'i aoina mai	5	1,057,789	808,542
Teugatupe	6	2,649,007	2,483,444
Aofa'i o aseta vave fa'aliliu tupeina		9,615,400	7,091,465
Aseta e lē vave fa'aliliu-tupeina			
Fanua, fale, masini ma meafaigaluega	10	193,223,568	196,155,525
Aofa'i o aseta e lē vave fa'aliliu-tupeina		193,223,568	196,155,525
AOFAI'GA O ASETA		202,838,967	203,246,990
FA'APUTUGATUPE MA NOATAGA			
Tupe Fa'avae, Fa'aputugātupe ma Tupe Fa'aputupu			
Tupe Fa'avae, Fa'aputugātupe ma Tupe Fa'aputupu		35,570,307	35,570,307
Toe iloiloga o tau o fanua	8	106,803,002	106,803,002
Tupe fa'aagaga	7	15,750	15,750
Tupe mama/(gau) fa'aputupu		(4,178,169)	(10,158,347)
Aofaiga o Tupe Fa'avae, Fa'aputugātupe ma Tupe Fa'aputupu		138,210,891	132,230,712
Noataga ile taimi nei			
Fefa'atauaiga ma aitalafu	9	312,189	290,443
Aiaiga mo faamanuiaga tagata faigaluega	11(a)	261,491	322,831
isi aiaiga	12	34,000	110,920
Nonogatupe fa'avaitaimi - vaega ile taimi nei	13	4,246,829	2,655,628
Vaega tupe maua tuua ile taimi nei	14(b)	1,923,432	1,873,090
Lafoga fa'asaoina	16	30,128	29,070
Lafoga tofogi taofiofi	15	14,674	8,988
Lafoga e tatau ona tofogi atu	17	679,486	810,333
Aofa'i o noataga ile taimi nei		7,502,229	6,101,303
Noataga e lē mo le taimi nei			
Noataga e lē ole taimi nei	13	5,871,110	10,730,000
Nonogatupe fa'avaitaimi - vaega tofogi i tua atu ole 12 masina	14(b)	51,254,738	53,228,514
Aitalafu ise vaiataimi umi	18	-	956,460
Aofa'i o Noataga e lē mo le taimi nei		57,125,848	64,914,974
Aofa'i o Noataga		64,628,076	71,016,278
AOFAI'GA O FA'APUTUGATUPE MA NOATAGA		202,838,967	203,246,990

O lenei anavatau e tatau ona faitau faatasi ma le faamatalaga ua tuuina atu e le tau tupe faamatalaga ile itulau e 8 ile 16.

**PULEGA O UAFU MA TAULAGA
FA'AMATALAGA O TUPE MAUA MA TUPE FAAALU
MO LE TAUSAGA FAAMAEINA ASO 30 IUNI 2017**

		2017	2016
TUPE MAUA	Fa'amatalaga	SAT\$	SAT\$
Tupe maua mai galuega		11,080,361	10,653,534
Tupe maua fa'aiti'itia	14(a)	1,923,432	1,901,857
Tufatufaga maua		157,947	149,007
Tului maua		191,015	38,681
Isi ālāgātupe maua	19	1,485,261	327,141
O isi tupe maua ovataimi toe fa'aola ma isi		2,719,029	2,595,509
Tupe maua ile togoti o lisi		761,487	637,218
Aofa'i o Tupe Maua		18,318,532	16,302,947
TUPE FA'AALU			
Totogi Suetusi - Tausitusi faamauina Isitolo Leota		50,000	50,000
Totogi Suetusi - Ofisa Suetusi		2,000	45,120
Tupe fa'aalu ile Komiti Faatino	22(i)	153,108	149,227
Tau fa'aiti'itia	10	3,583,940	3,984,671
Fa'amanuiaga tagata faigaluega	11(b)	76,258	402,304
Tau tupe	21	817,687	1,297,538
Tupe ua le maua ile tu'uina ese o meatotino tumau		317,344	1,117,310
Tupe le maua i tupe teu faafaigaluega		-	16,556
Isi tupe fa'aalu faatinoga o galuega	20	2,448,218	3,203,260
isi togoti fuapauina mo tomai faapitoa		58,627	16,615
Totogi ole afaigaluega		3,825,969	3,494,954
Aofa'i o Tupe Fa'aalu		11,333,150	13,777,555
Tupe Fa'asili		6,985,382	2,525,391

O lenei anavatau e tatau ona faitau faatasi ma le faamatalaga ua tuuina atu e le tau tupe faamatalaga ile itulau e 8 ile 16.

**PULEGA O UAFU MA TAULAGA
FA'AMATALAGA O SUIGA PALENI O TUPE FA AVAE
MO LE TAUSAGA FAAMAEINA ASO 30 IUNI 2017**

	Tupe Fa'avae o Sea SAT\$	Tau Toe Fetu''una'i SAT\$	Tupe Fa'aagaga SAT\$	Tupe mama/(gau) Fa'aputuputu SAT\$	Aofa'i SAT\$
Paleni e pei ona ile aso 30 Iuni 2015	35,570,307	106,803,002	15,750	(12,683,738)	129,705,321
Tupe faasili mo le tausaga faaiiuna 30 Iuni 2016	-	-	-	2,525,391	2,525,391
Paleni e pei ona ile aso 30 Iuni 2016	35,570,307	106,803,002	15,750	(10,158,347)	132,230,712
Tupe faasili mo le tausaga faaiiuna 30 Iuni 2017	-	-	-	6,985,382	6,985,382
Tufatufaga totogi				(1,005,204)	(1,005,204)
Paleni e pei ona ile aso 30 Iuni 2017	35,570,307	106,803,002	15,750	(4,178,169)	138,210,890

O lenei anavatau e tataua ona faitau faatasi ma le faamatalaga ua tuuina atu e le tau tupe faamatalaqa ile itulau e 8 ile 16.

**PULEGA O UAFU MA TAULAGA
FA'AMATALAGA O TUPE GALUE
MO LE TAUSAGA FAAMAEINA ASO 30 IUNI 2017**

	2017 Fa'amatalaga SAT\$	2016 SAT\$
Ālāgātupe maua mai galuega fai		
Tupe maua mai le tagata e faaaogāina auaunaga	14,829,836	15,315,020
Tupe totogi atu i tagata faigaluega ma galuega fai	(7,069,240)	(7,654,988)
Lafoga totogi taofiofi	(8,952)	-
Tului maua i luga o tupe teu vaitaimi	92,662	30,133
Aofa'i Ālāgātupe maua mai galuega fai	7,844,306	7,690,165
Ālāgātupe maua mai galuega fa'aolaola		
Fa'atauina o meatotino	(761,826)	(248,580)
Tupe maua mai le fa'atauina o meatotino	-	32,000
Tupe maua mai le tu'ueseina o uafu	250,000	-
Teugatupe ile Fa'aputugatupe Teu Fa'afaigaluega mo Mavaega Tausi o Samoa (UTOS)	-	(2,500,000)
Tufa'aga e totogia ile Malō o Samoa	(1,005,204)	-
Teugatupe fa'avaitaimi ile faletupe ole ANZ	-	(1,000,000)
Teugātupe tumau ua matua ile faletupe ole ANZ	1,034,246	-
Teugatupe fa'avaitaimi ile faletupe ole BSP	(3,034,245)	-
Teugatupe fa'avaitaimi ile Faletupe Tagatanu'u o Samoa (NBOS)	(1,500,000)	-
Teugatupe fa'avaitaimi toe teuina ile faletupe ole BSP	1,016,068	-
Teugatupe fa'avaitaimi toe teuina ile Faletupe Tagatanu'u o Samoa (NBOS)	1,533,469	-
Aofa'i Ālāgātupe maua mai galuega fa'aolaola	(2,467,492)	(3,716,580)
Ālāgātupe maua/fa'aalu mo nonōgātupe		
Tupe maua mai nonōgātupe	13,455,179	-
Totogi'ina ole nonōgātupe	(16,722,869)	(2,455,170)
Aofa'i Ālāgātupe maua/fa'aalu mo nonōgātupe	(3,267,690)	(2,455,170)
Fa'asiliga o tupe maua/(fa'aalu)	2,109,124	1,518,415
Tupe sa iai ile amataga	3,799,479	2,281,064
Tupe totoe	5,908,604	3,799,479
Maua mai:		
Tupe ile ofisa	1,300	1,100
Tupe ile faletupe ole ANZ	1,323,522	2,798,379
Teugatupe fa'avaitaimi	4,583,782	1,000,000
Aofa'i ole tinoitupe ile ofisa ma le faletupe	5,908,604	3,799,479

O lenei anavatau e tatau ona faitau faatasi ma le faamatalaga ua tuuina atu e le tau tupe faamatalaga ile itulau e 8 ile 16.

PULEGA O UAFU MA TAULAGA

FA'AMATALAGA E AVEA AI MA VAEGA O RIPOTI O TUPE

MO LE TAUSAGA FAAMAEINA ASO 30 IUNI 2017

1. Aotelega o Fa'amatalaga

Na fa'avaeina le Pulega o Uafu ma Taulaga ile aso 01 o Iulai 1999, i lalo ole Tulafono ale Pulega o Uafu ma Taulaga 1998. O malosi'aga ma mātāfaioi autu ale Pulega, olo'o fa'ama'oti mai lea i lalo ole Vaega 8 o lea Tulafono. Ole Pulega o Uafu ma Taulaga ose Fa'alapotopotoga Tuma'oti lea ale Malō ma o lana mātāfaioi ole va'aia lelei lea ma le puleaina o uafu, faapea nofoaga olo'o fela'uā'i ai oloa ma uta i Upolu ma Savai'i; ma o lona ofisa autū olo'o i Matautu-tai.

2. Fa'amatalaga o faiga fa'avae olo'o saunia ai tala o tupe

Olo'o au'ili'iliina atu i lalo faiga fa'avae olo'o fa'aogāina mo le tausiana o tusi ale Pulega o Uafu ma Taulaga fa'apea le saunia o ana fa'amatalaga tau tupe.

(a) Fa'amatalaga usita'ia fa'a-le-tulafono

O nei fa'amatalaga tau tupe ua saunia e tusa ai ma Tulafono fa'a-va-o-Mālo (IFRS) mo le lipotia o tupe i ona tulaga talafeagai, pei ona tapenaina ele Komiti Fa'atonu o tulaga fa'a-tausitusi fa'ava-o-Malo (IASB).

E tusa ai ma le Vaega 91 ole Tulafono o Pulega o Tupe 2001, ole Pulega o Uafu ma Taulaga ua fa'atulagaina ose fa'alapotopotoga ale Malo, ma ua alagatau ona tausisia le saunia o lipoti e tusa ai ma le Tulafono a Fa'alapotopotoga Tumaoti (Fa'atinoga o Galuega ma le Mafai ona Tali atu) 2001.

(b) Faiga fa'avae

O tala ma fa'amatalaga tau tupe olo'o fa'aaogaina ai le metotia o tau fa'avae, vaganā ai nisi o meatotino sa toe fetu'una'i o latou tau. Ole lipotiina o fa'amatalaga tau tupe e tatau ona tausisia le saunia o lipoti e tusa ai ma le tulafono fa'a-va-o-malo mo le lipotiina o tupe (IFRS), e mana'omia ai le Pulega ina ia faia ni tau fuafua ma fa'ata'atitia ni ālafua e iai o latou a'afiaga ile lipotiina o meatotino, aitalafu e le'i aoina mai, tupe maua ma tupe fa'aalu. E ona tula'i mai foi ni ese'esega i tau fuafua ma tau sa'o ole ā fa'aalia i lipoti. O nei tau fuafua ma ālafua e fa'aaauu pea ona iloiloina mai lea taimi i lea taimi; ma ole toe iloiloina o tau fuafua e fa'atino ile piliota olo'o fuafua iai ia tau, aemaise pe afai o ia tau fuafua olo'o a'afia ai lea piliota ma le taimi o lumanai.

(c) Fa'atusatusaina o fa'amatalaga

Ua fa'aogaina Fa'amatalaga Fa'atusatusa ina ia laugatāsia fa'amatalaga olo'o fa'ailoaina i tala o tupe i totonu ole tausaga fa'aletupe.

(d) Fa'atulagaina lelei ma le polokalama ole tupe mai fafo

O fa'amatalaga tau tupe, olo'o fa'amauina ma fa'ailoa ile tālā Samoa (SAT\$) ma o ituaiga tupe nei olo'o fa'aaogaina ele Pulega mo ana fa'amaumauga.

(e) Tupe ese mai isi atunu'u

O fesuia'iga o tupe mai fafo ua fa'aliliuina ile tālā Samoa ile tau olo'o iai le tau o fesuia'iga o tupe ile aso na fa'atautaia ai fefa'atauāiga ma galuega. O tupe totogi e le'i tu'uina mai ma aitalafu e le'i totogi'ina atu i fafo, ua fa'aliliuina ile tau o fesuia'iga o tupe ile aso na faia ai le tala o tupe. Ose ese'esega e maua mai ile fesuia'iga o tupe, ole a fa'amauina i fa'amatalaga o tupe maua ma tupe fa'aalu.

(f) Aitalafu le mauiina ma tupe e le'i tu'uina mai

Ole aoina o aitalafu, olo'o maitauina taimi fa'atulagaina, ma olo'o siakiina fo'i ini tulaga faifaiepa.

Ole a tusia foi se tau fa'aagaga mo tupe ua le mafai totogi'ina mai e fua ile aofa'iga olo'o ia ile fa'aiuga ole tausaga fa'aletupe. A iai ni aitalafu ua fa'amaonia le le mafai ona totogi'ina mai, ole a fa'aleaogaina loa ma toesea mai i tupe fa'aagaga.

PULEGA O UAFU MA TAULAGA FA'AMATALAGA E AVEA AI MA VAEGA O RIPOTI O TUPE MO LE TAUSAGA FAAMAEINA ASO 30 IUNI 2017

2. Aotelega o Fa'amatalaga (fa'aaau)

(g) Fa'amauiina o Tupe Maua

O tupe maua mai galuega fa'atino ese'ese ua fa'amauiina i totonu o Fa'amatalaga o Tupe Maua ma Tupe Fa'aalu peā fa'atinoina. O tupe maua mai le fa'atauina atu o oloa ua fa'amauiina i totonu o Fa'amatalaga o Tupe Maua pe afai ua maea ona tu'uina i tagata a'afiaga ma fa'amanuiaga ole umiaina. E leai se tupe maua e fa'amauiina pe afai e iai ni tulaga le mautinoa e fa'atatau ile aoina mai o ia tupe maua po'o luga fo'i oni tulaga oni oloa e toe fa'afo'i mai.

(h) Fa'amauiina o Tupe Fa'aalu

O tupe fa'aalu olo'o fa'amauiina i Fa'amatalaga o Tupe Maua ma Tupe Fa'aalu olo'o aofia ai tupe totogi mo le fa'atauina ma fa'alauiloaina, fa'agaioi'ina o galuega, lisi ma isi tupe fa'aalu.

(i) Tinoitupe

O tinoitupe olo'o fa'amauiina i Fa'amatalaga o Tupe Fa'avae, Meatotino ma Noataga, e aofia ai tupe olo'o fa'aaoga ma tupe olo'o teuina fa'avaitaimi i Faletupe e le silia atu ma le 90 aso.

(j) Tupe Maua e le'i totogi'ina mai ma isi

Tupe maua e le'i fa'ao'oina mai, olo'o fa'amauiina i lona tau talafeagai ina ua uma ona fuafua se tau aofa'i mo tupe ole ā le mafai ona aoina mai. I fa'aiuga o so'o se tausaga fa'aletupe, e lloilo ai po'o iai ni tupe maua e le mafai ona aoina mai, e fua iai se aofa'i e fa'amauiina ole a le mafai ona toe aoina. Afai ae iai se vaega tupe ua fa'amaonia e le mafai ona toe maua, ole ā lipotia loa ose tupe gau i lalo o fa'amaumauga o fa'amatalaga o Tupe Maua ma Tupe Fa'aalu.

(k) Fa'aagaga

E fa'amauiina i Fa'amatalaga o Tupe Fa'avae, Meatotino ma Noataga se vaega tupe fa'aagaga, pe afai olo'o iai ni a'afiaga ole Pulega ini mataupu tau le tulafono po'o ni mea na tutupu ile tuana'i e ono tataua ona totogiina ai se vaegatupe.

(l) Tupe totogi e le'i totogi'ina ma isi

O aitalafu ma oloa e le'i totogi'ina, olo'o fa'amauiina ile tau na tu'uina mai ai ma o nei tupe e le'i totogi'ina, o oloa ma ni auunaga sa faia mo le Pulega ae le'i mae'a le tausaga fa'aletupe, ole mafua'aga lea ua fa'amauiina ai o tupe totogi e le'i totogi'ina ma e tataua ile Pulega ona totogi'ina nei oloa ma auunaga ise taimi ile lumana'i.

(m) Fanua, Fale ma Masini

O meatotino tumau, fale ma masini, olo'o fua i tau na fa'atauina ai ona toese lea o tau fa'aputupu e fa'aiti'itia ai i tausaga ta'itasi faapea ni tau na fa'aleagaina ai. Ole metotia olo'o fa'aaoga mo faiga o tau fa'aputupu, olo'o fa'aaogaina le metotia e leai ai ni aogā o tau o meatotino tumau/aseta e toote pe ā mavae taimi fuafua e aogā ai.

O tausaga fuafua nei ua fa'aaogāina mo le fa'aiti'itia ole aogā o aseta:

Fanua	-
Uafu	30 - 60 tausaga
Fale	10 - 30 tausaga
Taligalu	60 tausaga
Va'a tosova'a	10 - 30 tausaga
Ta'avale	4 - 10 tausaga
Mea faigaluega ile ofisa	7 tausaga
Meafale ile ofisa	4 - 10 tausaga
Meafale, mea faigaluega ma isi mo uafu	3 - 5 tausaga
Masini	5 - 20 tausaga

PULEGA O UAFU MA TAULAGA FA'AMATALAGA E AVEA AI MA VAEGA O RIPOTI O TUPE MO LE TAUSAGA FAAMAEINA ASO 30 IUNI 2017

2. Aotelega o Fa'amatalaga (fa'aauau)

(n) Lafoga fa'aopo'opo i tau o oloa ma auaunaga

O tau uma lava o oloa, olo'o tu'uina mai e aunoa ma ni lafoga fa'aopo'opo, se'i vaganā ai aitalafu e le'i aoina mai i totonu faapea vaega tupe e le'i totogiina olo'o aofia ai totonu ia lafoga (pe a talafeagai).

(o) Lafoga totogi mo Tupe Faasili

O tupe maua ale Pulega e tu'usaunoa mai le totogi'ina ai oni lafoga.

(p) Tufatufaga

O tufatufaga, olo'o fa'amauiina ose noataga i taimi e tatau ona totogi'ina ai e pei ona aiāia i lalo ole tulafono o Fa'alapotopotoga ale Malo ma le Mafai ona Tali atu 2001.

(q) O tau mo nonogatupe

O tau uma lava mo nonogataupe olo'o fa'amauiina i totonu o Fa'amatalaga o Tupe Maua ma Tupe Fa'aalu i vaitaimi tonu na tula'i mai ai nei tau.

(r) Fa'amanuiaga ale aufaigaluega

Totogi, aso livi ma fa'amanuiaga mo tagata faigaluega umi

O fa'amanuiaga uma ale aufaigaluega, atoa ai ma o latou totogi, aso livi ma nisi fa'amanuiaga e le'i totogi'ina i totonu ole tausaga fa'aletupe lenei, olo'o fa'amauiina o tupe totogi e le'i totogi'ina.

O fa'amanuiaga mo nisi ole aufaigaluega e le o fa'amoemoe e totogiina atu i totonu ole sefulu lua masina ole tausaga fa'aletupe, olo'o fa'amauiina e tusa ai ma le fua fa'atatau e iai aofaiga e tatau ona totogi'ina atu ile lumana'i.

(s) Foa'i, fesoasoani, mea'alofa ma aofaiga ole tau atoa o meatotino

Tausiga o tusi o mea olo'o tāua i luga, olo'o fa'amauiina e tusa ai ma o latou ituaiga ma tulaga ile taimi e maua ai:

- i) O mea uma ua fa'moemoe e fesoasoani i galuega fai ale Pulega ma tinoitupe maua olo'o fa'amanino i tupe maua ile taimi e fa'arisiti ai.
- ii) O mea uma ua maua ile tulaga ole fa'a'itiitia ole tau o meatotino tumau olo'o fa'amanino i tupe maua i totonu ole tausaga e fa'arisiti ai.
- iii) O mea uma na maua ona ole fa'a'itiitia ole tau o meatotino foa'i mai e tagata po'o le Malo olo'o ta aofa'i i totonu ole tau atoa o aseta po'o

**PULEGA O UAFU MA TAULAGA
FA'AMATALAGA E AVEA AI MA VAEGA O RIPOTI O TUPE
MO LE TAUSAGA FAAMAEINA ASO 30 IUNI 2017**

				2017	2016
				SAT\$	SAT\$
3. TINOITUPE					
Tupe ile ofisa				1,000	1,000
Tupe mo sui ale talitupe				100	100
Tupe mo sui mo le auaunaga ile vaa ole Naomi				200	-
Tupe ile faletupe ole ANZ				1,323,522	2,798,379
				1,324,822	2,799,479
4. TEUGATUPE FA'A-VAITAIMI					
	Aso e matua ai	Ole tupe tului	Ole umi		
Faletupe ole ANZ				-	1,000,000
Faletupe ole BSP				1,016,068	-
Faletupe ole BSP				1,000,000	-
Faletupe ole BSP				1,034,245	-
Faletupe Tagatanu'u o Samoa				1,025,397	-
Faletupe Tagatanu'u o Samoa				508,071	-
				4,583,782	1,000,000
5. FEFA'ATAUA'IGA MA ISI TUPE MAUA E LE'I AOINA MAI					
Tupe maua e le'i totogi'ina mai				873,584	804,479
Aitalafu ua tu'uina atu ile tulafono				9,051	14,351
Birdon Marine				-	32,938
Isi vaegatupe e le'i totogi'ina mai				-	362
Toese: Tupe fa'aagaga mo aitalafu e ono le totogia				(120,459)	(201,990)
				762,176	650,140
Tupe maua mai iunite (UTOS)				157,947	149,007
Isi tupe maua ma tupe vave totogi atu				137,667	9,395
				1,057,789	808,542
6. TEUGATUPE					
Fa'aputugatupe Teu Fa'afaigaluega mo Mavaega Tausi a Samoa				2,649,007	2,483,444
				2,649,007	2,483,444
7. TUPE FA'AAGAGA					
Tupe fa'aagaga mo suau'u masa'a				15,750	15,750
				15,750	15,750
8. TOE ILOILOGA O TAU O FANUA					
Matautu				105,328,685	105,328,685
Aleipata				266,317	266,317
Asau				1,208,000	1,208,000
				106,803,002	106,803,002
9. FEFA'ATAUA'IGA MA AITALAFU					
Tupe totogi mo auaunaga				105,120	156,813
Isi tupe totogi e le'i totogia				124,829	94,641
Isi na nofo aitalafu ai ma fa'aputupu				82,240	38,989
				312,189	290,443

PULEGA O UAFU MA TAULAGA FA'AMATALAGA E AVEA AI MA VAEGA O RIPOTI O TUPE MO LE TAUSAGA FAAMAEINA ASO 30 IUNI 2017

10. MEATOTINO, FANUA, FALE, MASINI MA MEA FAIGALUEGA

	Uafu	Fanua	Fale	Taligatu	Va'a Tosova'a	Meafale ile		Ta'avale	Meafale ma		Masini	Aofa'iga
						Ofisa	Mea faigaluega		Mea faigaluega	ile Uafu		
Tau fa'avae	SAT\$	SAT\$	SAT\$	SAT\$	SAT\$	SAT\$	SAT\$	SAT\$	SAT\$	SAT\$	SAT\$	SAT\$
Paleni aso 1 Iulai 2015	87,974,955	4,644,993	14,469,749	6,585,012	18,265,118	253,561	644,924	1,089,059	270,862	10,131,654		144,329,887
Tau toe fuaina	-	106,803,002	-	-	-	-	-	-	-	-	-	106,803,002
Fa'aopo'opoga	219,278	-	-	-	-	738	58,965	43,478	194,413	14,348		531,220
Meatotino faatau/vavae'eseina	-	-	31,160	-	2,607,480	-	-	74,675	-	1,263,268		3,976,583
Paleni aso 30 Iuni 2016	88,194,233	111,447,995	14,438,589	6,585,012	15,657,638	254,299	703,889	1,057,862	465,275	8,882,734		247,687,526
Paleni aso 1 Iulai 2016	88,194,233	111,447,995	14,438,589	6,585,012	15,657,638	254,299	703,889	1,057,862	465,275	8,882,734		247,687,526
Fa'aopo'opoga	620,474	-	155,754	-	-	3,287	58,919	-	64,007	-		902,441
Meatotino faatau/vavae'eseina	-	-	-	-	-	-	-	12,258	5,798	816,371		834,427
Paleni aso 30 Iuni 2017	88,814,707	111,447,995	14,594,343	6,585,012	15,657,638	257,586	762,808	1,045,604	523,484	8,066,363		247,755,540
Tau fa'aputuputu fa'a'iti'itia o meatotino												
Paleni aso 1 Iulai 2015	23,182,821	-	5,196,822	2,495,711	12,112,825	163,967	504,002	1,035,953	145,230	5,471,222		50,308,553
Tau fa'a'iti'itia	1,642,411	-	429,506	109,750	902,217	22,922	130,008	31,610	38,512	677,735		3,984,671
Meatotino faatau/vavae'eseina	-	-	-	-	1,627,853	-	-	74,675	-	1,125,584		2,828,112
Paleni aso 30 Iuni 2016	24,825,232	-	5,626,328	2,605,461	11,387,189	186,889	634,010	992,888	183,742	5,023,373		51,465,112
Paleni aso 1 Iulai 2016	24,825,232	-	5,626,328	2,605,461	11,387,189	186,889	634,010	992,888	183,742	5,023,373		51,465,112
Tau fa'a'iti'itia	1,613,937	-	427,470	109,750	786,017	18,419	41,564	25,557	66,274	494,952		3,583,940
Meatotino faatau/vavae'eseina	-	-	-	-	-	-	-	12,258	3,549	501,273		517,080
Paleni aso 30 Iuni 2017	26,439,169	-	6,053,798	2,715,211	12,173,206	205,308	675,574	1,006,187	246,467	5,017,052		54,531,972
Paleni tauaveina mai												
30 Iuni 2016	63,369,001	111,447,995	8,812,261	3,979,551	4,270,449	67,410	69,879	64,974	281,533	3,859,361		196,222,414
30 Iuni 2017	62,375,538	111,447,995	8,540,545	3,869,801	3,484,432	52,278	87,234	39,417	277,017	3,049,311		193,223,568

**PULEGA O UAFU MA TAULAGA
FA'AMATALAGA E AVEA AI MA VAEGA O RIPOTI O TUPE
MO LE TAUSAGA FAAMAEINA ASO 30 IUNI 2017**

	2017 SAT\$	2016 SAT\$
11. FA'AMANUIAGA TAGATA FAIGALUEGA		
(a) Fa'aagaga		
Fa'aagaga mo aso livi mo e ua loa auunaga	32,498	56,873
Fa'aagaga mo le 30% o fa'amanuiaga mo livi ma'i	28,768	265,958
Fa'aagaga mo faamanuiaga mo e vave litaea	200,225	-
	<u>261,491</u>	<u>322,831</u>
(b) Fa'amanuiaga ale aufaigaluega ile tausaga		
30% livi mo aso ma'l ma livi mo e ua loa auunaga	204,616	402,304
Aso malolo uumi - fa'aititia	(128,358)	-
	<u>76,258</u>	<u>402,304</u>
12. ISI FA'AAGAGA		
O isi aiaiga ua faamaoti mai e faapea:		
Fa'aagaga mo pili a su'etusi	34,000	34,000
Fa'aagaga mo galuega fia fa'aleleia	-	76,920
	<u>34,000</u>	<u>110,920</u>
13. NONOGATUPE FA'AVAITAIMI		
(a) Fa'aaoga i totonu ole 12 masina		
Teugatupe ile Fa'aputugatupe Teu Fa'afaigaluega mo Mavaega Tausi o Samoa (UTOS) - nonogatupe fa'avaitaimi	4,246,829	2,655,628
	<u>4,246,829</u>	<u>2,655,628</u>
(b) A mae'a le 12 masina		
Teugatupe ile Fa'aputugatupe Teu Fa'afaigaluega mo Mavaega Tausi o Samoa (UTOS) - nonogatupe fa'avaitaimi	5,871,110	10,730,000
	<u>5,871,110</u>	<u>10,730,000</u>
	<u>10,117,938</u>	<u>13,385,629</u>
14. TUPE MAUA FA'AITI'ITIA		
(a) Tupe maua fa'aiti'itia sa fuafuaina i totonu ole tausaga		
Tupe maua fa'aiti'itia	1,923,432	1,901,857
	<u>1,923,432</u>	<u>1,901,857</u>
(b) Tupe fa'aiti'itia		
Vaega ile taimi nei	1,923,433	1,873,090
Vaega totogi atu i tua ole 12 masina	51,254,738	53,228,514
	<u>53,178,170</u>	<u>55,101,604</u>

	<u>Tau</u>		<u>Tau fa'aiti'itia</u>
<u>Meatotino foa'i mai le Malo</u>	<u>Fa'avae</u>	<u>Tausaga</u>	<u>ile tausaga</u>
UNSIDIS	271,003	3-10	82,397
Faapoopoina Uafu - 2004	68,000,000	60	1,062,922
Atafa - 2002	13,757,872	20	687,894
Tafola - 2000	1,804,400	20	90,220

Tausiga o tusi mo Tupe Faameaalofa Malo

Ua fa'aaogaina ele Pulega aiaiga fa'atausitusi fa'ava-o-Malo (IAS 20) e fa'amauina ai meatotino foa'i mai ele Malo ile fa'atuina o nei mea'alofo oni tupe maua fa'aiti'itia ma tusi ese e pei o tupe maua ile fa'amatalaga o fa'atinoga tau tupe I luga ose fetai tonu ai ma faiga fa'avae I luga ole olaga aoga ole meatotino sa foa'i mai

**PULEGA O UAFU MA TAULAGA
FA'AMATALAGA E AVEA AI MA VAEGA O RIPOTI O TUPE
MO LE TAUSAGA FAAMAEINA ASO 30 IUNI 2017**

	2017	2016
	SAT\$	SAT\$
15. LAFOGA TOTOGI TAOFIOFI		
10% Lafoga Totogi Taofioofi	14,674	8,988
	<u>14,674</u>	<u>8,988</u>
E toesea ele Pulega o Uafu ma Taulaga le 10% o lafoga taofiofi mai tupe totogi ua faia ia latou e tu'uina atu iai auaunaga ina ia tausisia ai le fuaiupu 95 ole Tulafono o Lafoga o Tupe Maua 2012.		
16. LAFOGA FA'ASAOINA		
Lafoga fa'asaoina e 10%	30,128	29,070
	<u>30,128</u>	<u>29,070</u>
Aua o galuega, ole a taofia se aofaiga fa'atumauiina ina ia mautinoa ai le tausisia ele konekarate ma ona tu'utuuga po o noataga tausiga mo se vaitaimi e 6 ile 12 masina ile maea ai ole konekarate i se aofaiga e le sili atu i lo le 10% ole tau konekarate atoa e tusa ma le fuaiupu B14: Taiala mo le Malo faatauina ma feagaiga.		
17. LAFOGA E TATAU ONA TOTOGI ATU		
15% ole Lafoga e tatau ona totogi atu	679,486	810,333
	<u>679,486</u>	<u>810,333</u>
18. AITALAFU ISE VAITAIMI UMI		
Matagaluega o Tiute (amata'ina mai 2006/2007)	-	956,460
	<u>-</u>	<u>956,460</u>
Ile fonotaga ale Kapeneta aso 2 Fepuari 2017, FK (17) 03 ua faamaonia le tusi ese o lenei aitalafu ise taimi umi olo'o i totonu o tusi ale Matagaluega Mo Tupe Maua ae tumau pea le latou lisi i luga ole uafu ile \$10 ile tausaga e pei ona iai ile FK (09) 01.		
19. ISI ĀLĀGĀTUPE MAUA		
Fautuaga totogifuapauina	44,993	32,273
Tatalaina o fa'amomoli mo le la'uina	2,211	2,148
Aitalafu le mautinoa ua toe fa'aola mai	30,261	8,456
Tupe maua mai le tu'ueseina o uafu	250,000	-
Suiga o noataga umi/noataga	943,383	-
Isi tupe maua	214,413	284,265
	<u>1,485,261</u>	<u>327,141</u>
20. ISI TUPE FA'AALU I GALUEGA FA'ATINO		
Fa'agaioioina ma isi galuega fa'atino	1,132,540	1,507,548
Toe fa'aleleia ma le tausiga	162,579	314,216
Vai ma le eletise	1,078,705	1,284,607
Mea laiti e fa'atino ai galuega	48,242	77,858
Fa'alauiloina	26,152	19,032
	<u>2,448,218</u>	<u>3,203,260</u>
21. TAU TUPE		
Tului i luga o nonogatupe	810,040	1,271,661
Pili ale Faletupe	7,647	25,877
	<u>817,687</u>	<u>1,297,538</u>

**PULEGA O UAFU MA TAULAGA
FA'AMATALAGA E AVEA AI MA VAEGA O RIPOTI O TUPE
MO LE TAUSAGA FAAMAEINA ASO 30 IUNI 2017**

22. FESO'OTA'I I GALUEGA E VAEGA AUAI

i) Taii o Fa'atonu

O Fa'atonu ole Pulega o Uafu ma Taulaga ao fa'agasolo le vaiataimi fa'aletupe o:

- Elisaia Fiu Kolia: Faifeau Samoa (Ta'ita'ifono)
- Tuatagaloa Shane Wulf (Fa'atonu)
- Taula Paul Phillips (Fa'atonu)
- Lei'a Tu'ulima Aima'asu (Fa'atonu)
- Afoa Ray Pereira (Fa'atonu)
- Pisaina Leilua-Lei Sam (Fa'atonu)
- Nu'uausala Siaso Siutaia: Faifeau Samoa (Fa'atonu), tōfia ile masina o Ianuari 2017
- Kapeteni George Clarke (Fa'atonu), fa'amavae ia Setema 2016

Taii o Fa'atonu ma Ta'ita'i ole Pulega

	2017 SAT\$	2016 SAT\$
Totogifuapauina o Fa'atonu	119,630	120,523
Tupe fa'aalu i fonotaga	8,265	21,717
Alauni ole Komiti Fa'atino ma isi	10,265	-
Alauni mo femalaga'ina	14,948	6,987
	153,108	149,227

ii) Tau o tagata ole Pulega

Ole totogi o tagata faigaluega ile taimi ole tausaga

Totogi ma faamanuiaga galuega vaiataimi puupuu	525,661	558,645
--	----------------	----------------

iii) Tu'utu'uga ma aiaiga o gaoioiga fa'apisinisi ma isi vaega e feso'ota'i

O fa'atauga mai le vaega e feso'otai iai ua faia e ala ile feua'iga fa'apisinisi ile maketi masani ma i luga o tu'utu'uga fa'apisinisi e masani ai.

23. MEAFAIGALUEGA TAU TUPE

O lenei fuaiupu olo'o oto'oto le a'afia ale Pulega i lamatiaga tau tupe ma fa'amatalaina ai le auala e fa'aaoga ele Pulega e pūlea ma mataitū nei lamatiaga. O ia tulaga lamatia e lamatia ai aitalafu, meatotino, e lamatia ma maketi tulaga lamatia o le aia fua faatatau ma tulaga lamatia o fesuaiga o tupe mai fafo.

a) Puleaina o tulaga lamatia ole galuega

Ole aoina, tuliloaina ma le silasila toto'a i aitalafu, ua tulimata'iina tulaga ona ole popolega ne'i le totogi'ina nei aitalafu ma aveva lea ma tupe gau ile Pulega.

Olo'o silasila toto'a fo'i le Pulega ile tu'uina atu lea na'o avanoa aitalafu i kamupani ua loa ona latou galulue fa'atasi ma ua fa'amaonia le lelei o tulaga tau seleni, ina ia fo'ia ai le gau mai aitalafu le totogia.

**PULEGA O UAFU MA TAULAGA
FA'AMATALAGA E AVEA AI MA VAEGA O RIPOTI O TUPE
MO LE TAUSAGA FAAMAEINA ASO 30 IUNI 2017**

23. MEAFAIGALUEGA TAU TUPE (fa'aaauau)

b) Mataituina ole lava o tupe mo le fa'atinoga o galuega

Ole Komiti Fa'atonu ale Pulega o Uafu ma Taulaga, ua fitoitonu lea ma le silasila toto'a ile lavatia e fa'atino ai galuega ale Pulega, e ala lea ile mata'ituina lelei o ta'iala mo le fa'aaogaina o tupe fa'avae fa'aleoleo, o tupe teu i faletupe, fa'aiti'itia o aitalafu aemaise le mataituina lea o tupe fetafea'i ina ia fa'aitiitia ni a'afiaga tau tupe e a'afia ai le Pulega ona o ia tulaga.

Olo'o fa'atumauiina pea le fa'asaoina ele Pulega o tupe i teugatupe i faletupe ma le fa'aauiina pea le mataituina o nonogatupe ise va'aiga tu'utu'umamao ma tinoitupe ina ia o gatasi ma tala'aga oto'oto o aseta ma noataga tau tupe

24. TUPE FA'AVAE UA FA'AMAUTUINA

(a) Tupe fa'avae ua fa'amautuina mo galuega tetele

O galuega tetele olo'o loma nei ale Pulega o Uafu ma Taulaga, ua patino lea ile fa'aleleia o tulaga tau fale ma uafu ina ia ausia le naunauta'iga mo le fa'aleleia o auunaga. O lenei poloketi ole a fa'atinoina mo le 24 masina, amata atu ia Iulai 2016 se'ia o'o ile masina o Iuni 2018; ma o lea ua fa'atupeina ele Malo o Iapani i lalo ose ioega ma le Malo o Samoa. Ole tau atoa o lea poloketi e tusa lea ma le JPY3,187,776,000 (tupe Iapani) po'o le USD\$ 32.32 miliona (tupe Amerika); ae ole sao ole tatou Malo e \$230,000 e fa'atupeina lea e le Pulega o Uafu ma Taulaga. O lenei poloketi e aofia ai:

Galuega fa'atino mo le:

1. Fa'aopo'opoina ole uafu autu mai le 165 mita ile 302 mita
2. Fa'aleleia atili ole nofoaga teu pusa oloa
3. Fa'aleleia o pa'u taliuafu mo le saogalemu o va'a
4. Fa'aleleia o nofoaga e fa'amaui ai maea o va'a
5. Fa'aleleia o tulaga mo le gasologa o pasese

Meafaigaluega

1. Fa'aleleia o va'a tosova'a ina ia umi lo latou aoga
2. Toefuataina ma fa'aleleia o meafaigaluega fesoasoani i fa'atautaiga

(b) Isi tupe fa'avae

E le o silafia e Fa'atonu isi tupe fa'avae ma le tu'uina atu mo le fa'aiuga ole tausaga. (2016: SAT\$0)

25. NOATAGA MAUTINO

E le o iai se silafia o Fa'atonu o so'o se noataga ile fa'aiuga ole tausaga. (2016: SAT\$0)

26. FA'AMAONIGA O FA'AMATALAGA TAU TUPE

O nei fa'amatalaga tau tupe na fa'amaonia ele Komiti Fa'atonu ma fa'atagaina mo le tu'uina atu ile aso 31 Oketopa 2017.

FUAINUMERA FAAMAUINA- UAFU I APIA

DISCHARGE TONNAGES JULY 2016- JUNE 2017

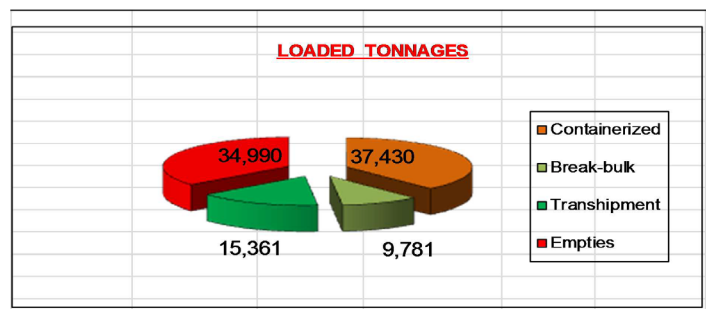
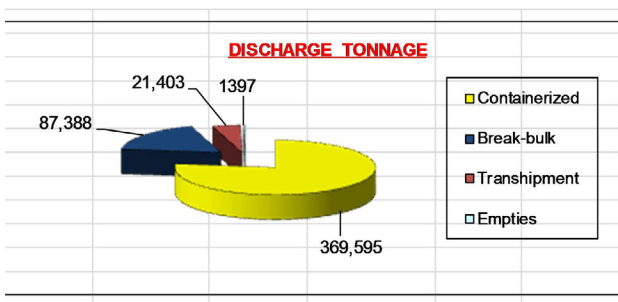
DISCHARGE TONNAGES

Months	Containerized	Break-bulk	Transshipment	Empties	Total
July	33,329	7,424	1,904	352	43,009
August	28,987	8,717	1,510	143	39,357
September	38,705	6,172	2,379	27	47,283
October	31,093	8,219	3,424	121	42,857
November	34,057	7,995	269	12	42,333
December	40,035	10,383	3,574	5	53,997
January	28,578	5,353	1,471	145	35,547
February	20,701	3,093	629	5	24,428
March	33,207	11,884	551	125	45,767
April	24,713	8,878	1,346	186	35,123
May	25,986	4,625	2,252	67	32,930
June	30,204	4,645	2,094	209	37,152
Total	369,595	87,388	21,403	1397	479,783

LOADED TONNAGES JULY 2016- JUNE 2017

LOADED TONNAGES

Monthly	Containerized	Break-bulk	Transshipment	Empties	Total
July	3292	1354	1236	2712	8594
August	3920	398	1647	3352	9317
September	4192	1030	1450	2963	9635
October	2557	525	2527	3750	9359
November	3073	1163	635	2570	7441
December	3633	824	527	3856	8840
January	2032	619	1696	2915	7262
February	2110	712	809	1890	5521
March	3948	67	729	4195	8939
April	2707	765	608	2036	6116
May	2760	1051	1854	2185	7850
June	3206	1273	1643	2566	8688
Total	37430	9781	15361	34990	97562



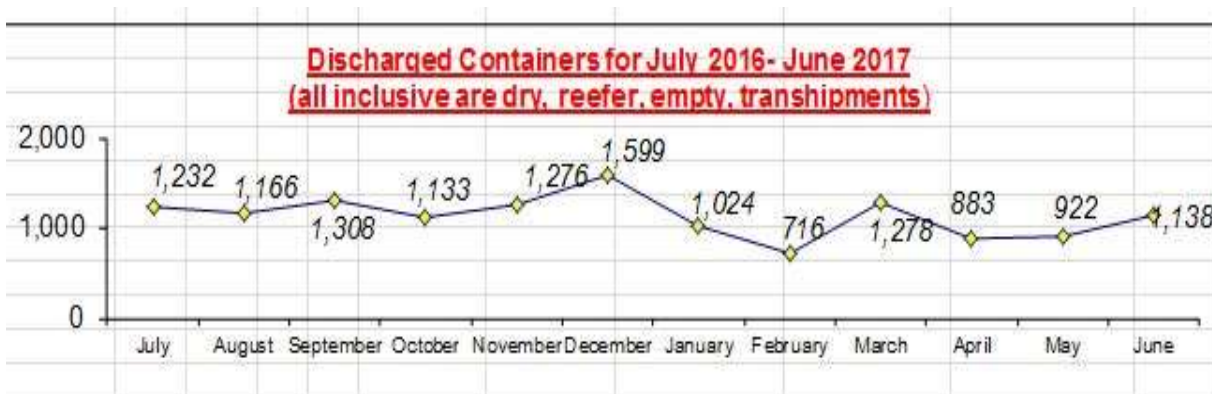
CONTAINER TRADE FOR JULY 2016- JUNE 2017

DISCHARGED CONTAINER

Months	FULL DRY		FULL REEFER		Empty-Dry	Empty-Dry	Empty-Reefer	Empty-Reefer	Transhipments	TOTAL
	20	40	20	40	20	40	20	40		
July	742	253	34	81	2	4	38	39	39	1232
August	838	189	35	53	0	6	0	16	29	1166
September	845	282	36	82	1	1	0	4	57	1308
October	768	176	28	81	0	0	0	24	56	1133
November	967	208	38	48	0	2	1	0	12	1276
December	1080	281	37	98	0	0	0	0	103	1599
January	680	174	43	62	5	0	0	27	33	1024
February	494	113	24	63	0	0	0	1	21	716
March	889	263	39	42	1	1	13	15	15	1278
April	552	153	30	57	0	2	17	23	49	883
May	579	165	28	60	1	0	11	5	73	922
June	688	200	27	62	0	1	0	43	117	1138
Total	9122	2457	399	789	10	17	80	197	604	13675

LOADED CONTAINERS

Months	FULL DRY		FULL REEFER		Empty-Dry	Empty-Dry	Empty-Reefer	Empty-Reefer	Transhipments	TOTAL
	20	40	20	40	20	40	20	40		
July	93	7	19	20	751	192	8	35	45	1170
August	96	9	23	40	792	277	46	54	59	1396
September	104	9	25	38	833	197	11	43	51	1311
October	55	3	20	21	905	366	14	41	51	1476
November	93	8	22	10	663	195	11	50	23	1075
December	96	12	25	19	860	264	14	75	18	1383
January	42	8	22	11	653	260	3	72	55	1126
February	75	5	15	5	427	108	20	82	26	763
March	77	27	40	9	1185	230	37	45	21	1671
April	72	9	35	10	450	150	21	67	20	834
May	61	12	35	19	512	146	17	61	54	917
June	63	4	31	29	648	175	7	65	77	1099
Total	927	113	312	231	8679	2560	209	690	500	14221



DISCHARGED & LOADED BREAK-BULKERS FOR JULY 2016 TO JUNE 2017 (TONNAGES)

AGENTS	VESSEL	July		August		September		October		November		December		January		February		March		April		May		June		Totals	
		DIS	LLD	DIS	LLD	DIS	LLD	DIS	LLD	DIS	LLD	DIS	LLD	DIS	LLD	DIS	LLD	DIS	LLD	DIS	LLD	DIS	LLD	DIS	LLD	DIS	LLD
TRANSAM	MV Captaine Tasman	117	0	123	0	125	1	67	0	79	0	119	0	2	0	17	0	96	0	91	0	115	0	87	0	1,038	1
	Southern Lilly	4,521	17	4,135	0	3,016	0	3,745	0	4,225	0	5,841	0	2,442	0	1,487	0	5,461	3	2,023	0	2,630	0	2,568	0	42,094	20
	Cap Taputapu	12	0	64	0	75	0	23	0			39	0	85	0	51	0	49	0	31	0	43	0	63	0	535	0
	MV Komaiwai	0	390																							0	390
	BBC Nagasaki																	1,480	0							1,480	0
	MV Thorco Isadora																			5,117	0					5,117	0
BBE	Tropical Islander			796	0			1,485	5			1,067	0			531	0			337	0			291	0	4,507	5
	Coral Chief			966	0			1,559	0			522	0			221	0			77	0			244	0	3,589	0
	South Islander			1,501	0			770	0			703	0					852	0			438	0			4,264	0
	Coral Islander	974	4			704	0			603	0			248	0			1,362	1			383	0			4,274	5
	MV Chentu	282	5			706	3																			988	8
	Pacific Islander	1,025	2			853	0			950	0			803	0					473	0			630	4	4,734	6
	MV Winner									1,128	0															1,128	0
MOLIDA	Liloa			123	0	166	9			123	2	524	0	60	0	200	0	297	4	189	0	85	0	307	0	2,074	15
	Olomana	69	255	159	10																					228	265
	MV Islander			7	0	10	0	1	0	145	2	23	2	2	0	11	0	4	0	16	0	7	0			226	4
	IMUA			484	2	66	13	268	1	364	11			771	10	203	0	62	21	160	0	237	32	15	4	2,630	94
	Mv Samoana																							17	0	17	0
SWIRE	Papuan Chief											1,004	0					1,280	38			45	0			2,329	38
	New Guinea Chief													532	0			526	0					303	0	1,361	0
PFL	Polynesia	84	0	19	0	115	0	56	0	77	0	94	0	75	0	37	0			30	0	88	0	15	0	690	0
	Forum Pacific	104	3	138	0	101	0			197	0	91	0	11	0	43	0	152	0	117	0	137	0			1,091	3
TOKELAU	Mataliki	34	368	84	230	64	281	94	264	104	251	211	214	115	256	90	194	99	0	87	225	47	332	58	222	1,087	2,837
	Mv Norfolk Guardian									0	897	0	546												861	0	2,835
SSS	Lady Naomi											47	62	0	82	49	0									96	144
SSC	MV SSC 40	202	310	118	156	171	192							207	271	153	518	164	0	130	540	315	425			1,460	2,412
	Samoan Express							151	255			98	0									55	262	47	182	351	699
	Totals	7,424	1,354	8,717	398	6,172	1,030	8,219	525	7,995	1,163	10,383	824	5,353	619	3,093	712	11,884	67	8,878	765	4,625	1,051	4,645	1,273	87,388	9,781

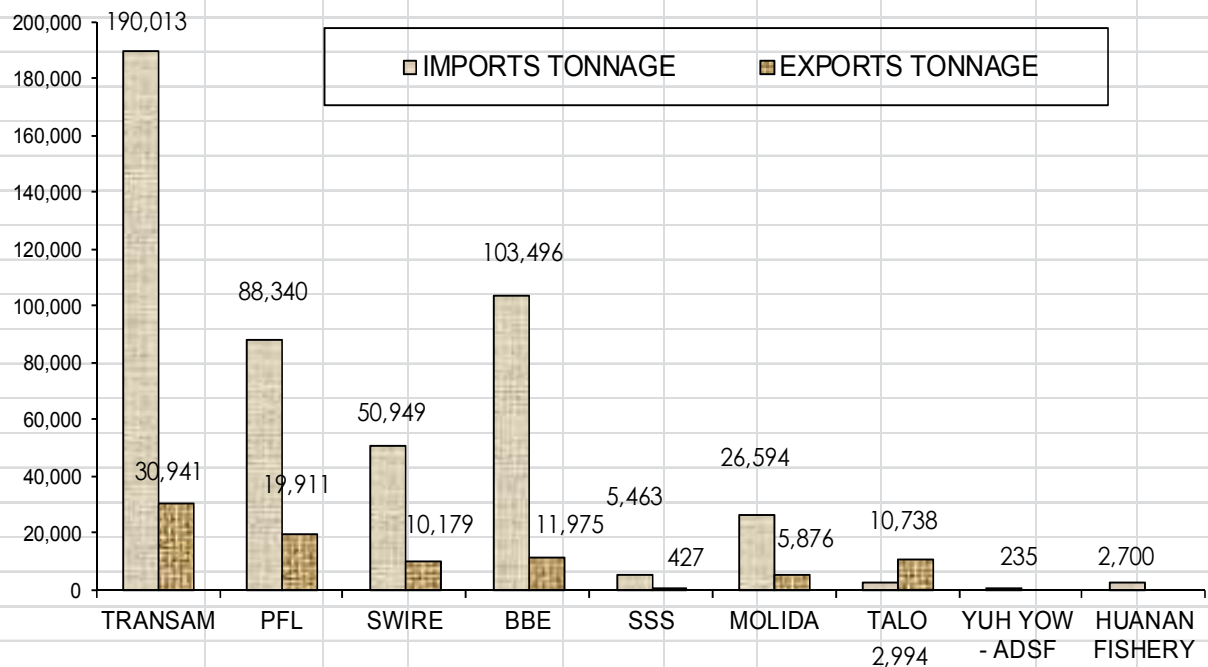
DISTRIBUTION OF "TONNAGES" CARGO, IMPORTED AND EXPORTED PER RESPECTIVE AGENTS FOR JULY 2016 TO JUNE 2017

AGENTS	DISCHARGED					LOADED			
	IMPORTS	BULKS	T/SHIPMENTS	EMPTYES	TOTALS	EXPORTS	T/SHIPMENTS	EMPTYES	TOTAL S
TRANSAM	156,173	29,284	4,101	455	190,013	11,576	3,913	15,452	30,941
PFL	67,552	19,131	1,639	18	88,340	13,064	1,480	5,367	19,911
SWIRE	40,736	4,773	5,391	49	50,949	3,163	2,702	4,314	10,179
BBE	77,201	22,545	3,076	674	103,496	3,543	830	7,602	11,975
SSS	1,947	3,377	25	114	5,463	200	25	202	427
MOLIDA	17,995	5,284	3,260	55	26,594	928	2,884	2,064	5,876
TALO	0	2,994	0	0	2,994	10,738	0	0	10,738
YUH YOW - ADSF	0	0	235	0	235	6,688	488	0	7,176
HUANAN FISHERY	0	0	2,700	0	2,700	0	3,014	0	3,014
TOTALS	361,604	87,388	20,427	1,365	470,784	49,900	15,336	35,001	100,237

DISCHARGED / LOADED TONNAGES PER RESPECTIVE AGENTS

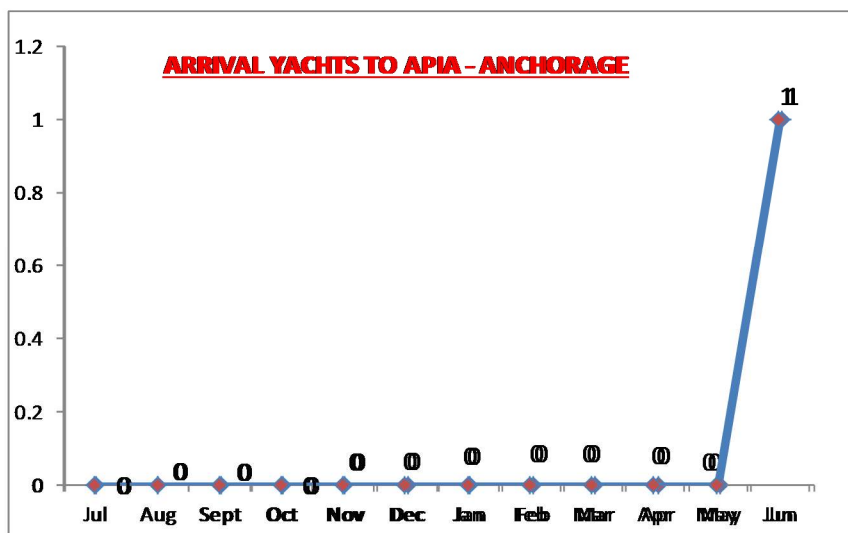
SHIPPING AGENTS	IMPORTS	%	EXPORTS	%	
TRANSAM	190,013	40.36	30,941	30.87	TRS-TRANSAM
PFL	88,340	18.76	19,911	19.86	PFL-PACIFIC FORUM LINE
SWIRE	50,949	10.82	10,179	10.15	BBE-BETHAM BROTHERS ENT
BBE	103,496	21.98	11,975	11.95	SSS-SAMOA SHIPPING SERVICES
SSS	5,463	1.16	427	0.43	PS-POLYNESIAN SHIPPING SERVICES
MOLIDA	26,594	5.65	5,876	5.86	MSA-MOLIDA SHIIPPING AGENCY
TALO	2,994	0.64	10,738	10.71	TALO-TOKELAU AFFAIRS
YUH YOW - ADSF	235	0.05	7,176	7.16	ADSF - APIA DEEP SEA FISHING
HUANAN FISHERY	2,700	0.57	3,014	3.01	
TOTALS	470,784	100	100,237	100	

DISTRIBUTION OF DISCHARGED & LOADED TONNAGE



YACHTS CALLING INTO APIA ANCHORAGE FROM JULY 2016 TO JUNE 2017

Arrival Month	# of Yachts
Jul	0
Aug	0
Sept	0
Oct	0
Nov	0
Dec	0
Jan	0
Feb	0
Mar	0
Apr	0
May	0
Jun	1
Total	1



TYPE	Jul	Aug	Sept	Oct	Nov	Dec	Jan	Feb	Mar	Apr	May	June	Total
Sail												1	1
Cutter	No Yachts	No Yachts	No Yachts	No Yachts	No Yachts	No Yachts	No Yachts	No Yachts	No Yachts	No Yachts	No Yachts		0
Sloop	No Yachts	No Yachts	No Yachts	No Yachts	No Yachts	No Yachts	No Yachts	No Yachts	No Yachts	No Yachts	No Yachts		0
Catamaran	No Yachts	No Yachts	No Yachts	No Yachts	No Yachts	No Yachts	No Yachts	No Yachts	No Yachts	No Yachts	No Yachts		0
Ketch	No Yachts	No Yachts	No Yachts	No Yachts	No Yachts	No Yachts	No Yachts	No Yachts	No Yachts	No Yachts	No Yachts		0
Schooner	No Yachts	No Yachts	No Yachts	No Yachts	No Yachts	No Yachts	No Yachts	No Yachts	No Yachts	No Yachts	No Yachts		0
Other													0
Total	0	0	0	0	0	0	0	0	0	0	0	1	1

COUNTRIES	Jul	Aug	Sept	Oct	Nov	Dec	Jan	Feb	Mar	Apr	May	Jun	Total
British													0
German													0
Australia													0
USA													0
France													0
Dutch													0
Poland													0
Vanuatu													0
Cook Is													0
Irish													0
Austria													0
Finnish													0
Belgiun													0
Canada													0
Switzerland													0
Finland													0
Norway													0
Delaware													0
New Caledonia													0
New Zealand													0
Danish													0
South Africa													0
Pagopago													0
Data not available												1	1
Total	0	0	0	0	0	0	0	0	0	0	0	1	1

INTER-ISLAND SUMMARY (APIA - PAGOPAGO - APIA) FOR JULY 2016 TO JUNE 2017

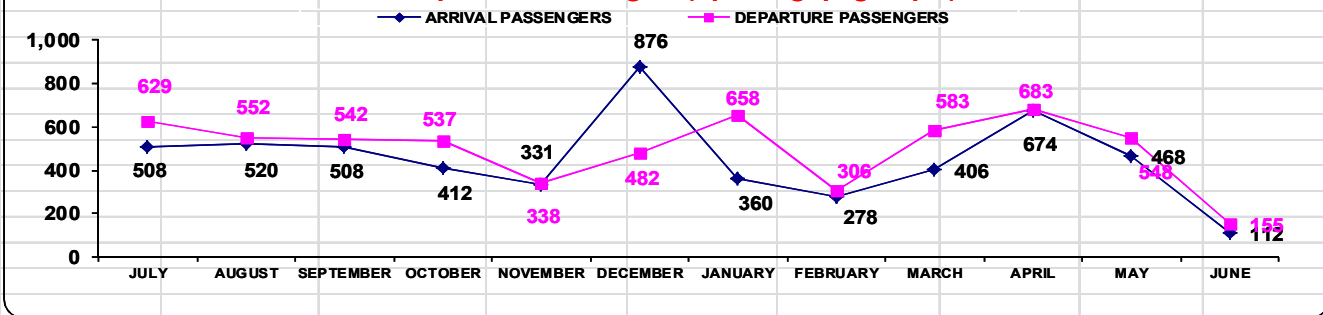
APIA - PAGOPAGO- APIA	ARRIVAL PASSENGERS	ARRIVAL CARGO (lbs)	ARRIVAL CARGO (tons)	ARRIVAL CARGO (m3)	DEPARTURE PASSENGERS	DEPARTURE CARGO (lbs)	DEPARTURE CARGO (tons)	DEPARTURE CARGO (cm3)
JULY	508	0	0	316	629	71,381	32	14
AUGUST	520	0	0	298	552	76,969	35	24
SEPTEMBER	508	0	0	315	542	89,842	41	11
OCTOBER	412	0	0	274	537	545,921	248	28
NOVEMBER	331	0	0	162	338	58,340	27	27
DECEMBER	876	0	0	717	482	54,230	25	19
JANUARY	360	0	0	230	658	49,954	23	27
FEBRUARY	278	0	0	235	306	36,758	17	10
MARCH	406	0	0	465	583	91,323	42	0
APRIL	674	0	0	496	683	54,207	25	7
MAY	468	0	0	351	548	27,740	13	6
JUNE	112	0	0	247	155	11,506	5	4
TOTALS	5,453	0	0	4,106	6,013	1,168,171	531	177

INTER-ISLAND SUMMARY (APIA-TOKELAU-APIA) FOR JULY 2016 TO JUNE 2017

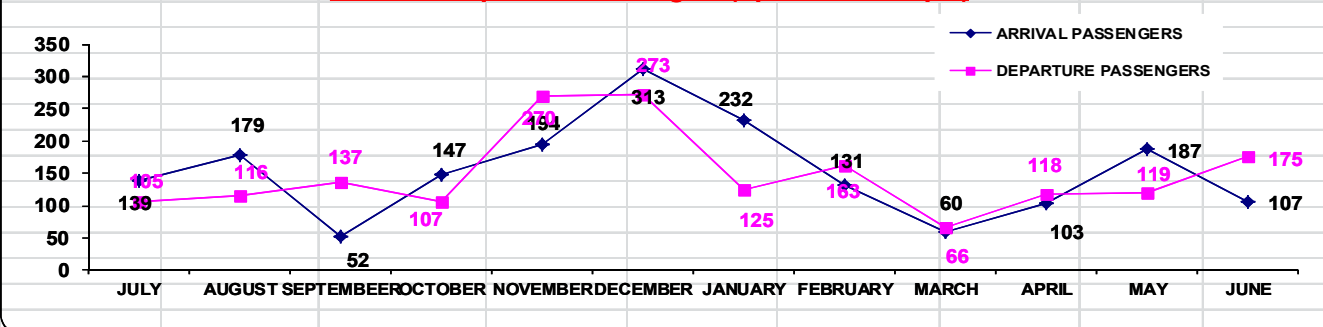
APIA-TOKELAU-APIA	DEPARTURE PASSENGERS	DEPARTURE CARGO (kgs)	DEPARTURE CARGO (tons)	DEPARTURE CARGO (m3)	ARRIVAL PASSENGERS	ARRIVAL CARGO (KGS)	ARRIVAL CARGO (tons)	ARRIVAL CARGO (m3)
JULY	105	397,745	398	662	139	70,146	70	232
AUGUST	116	241,624	242	384	179	96,406	96	200
SEPTEMBER	137	516,055	516	1,001	52	362,246	362	763
OCTOBER	107	268,824	269	517	147	65,610	66	242
NOVEMBER	270	639,905	640	640	194	327,790	328	999
DECEMBER	273	174,398	174	218	313	88,595	89	305
JANUARY	125	119,886	120	525	232	126,016	126	321
FEBRUARY	163	590,310	590	731	131	85,340	85	288
MARCH	66	704,681	705	959	60	70,630	71	224
APRIL	118	454,140	454	726	103	184,625	185	376
MAY	119	755,129	755	965	187	50,240	50	295
JUNE	175	566,830	567	1,263	107	34,925	35	92
TOTALS	1,774	5,429,527	5,430	8,591	1,844	1,562,569	1,563	4,337

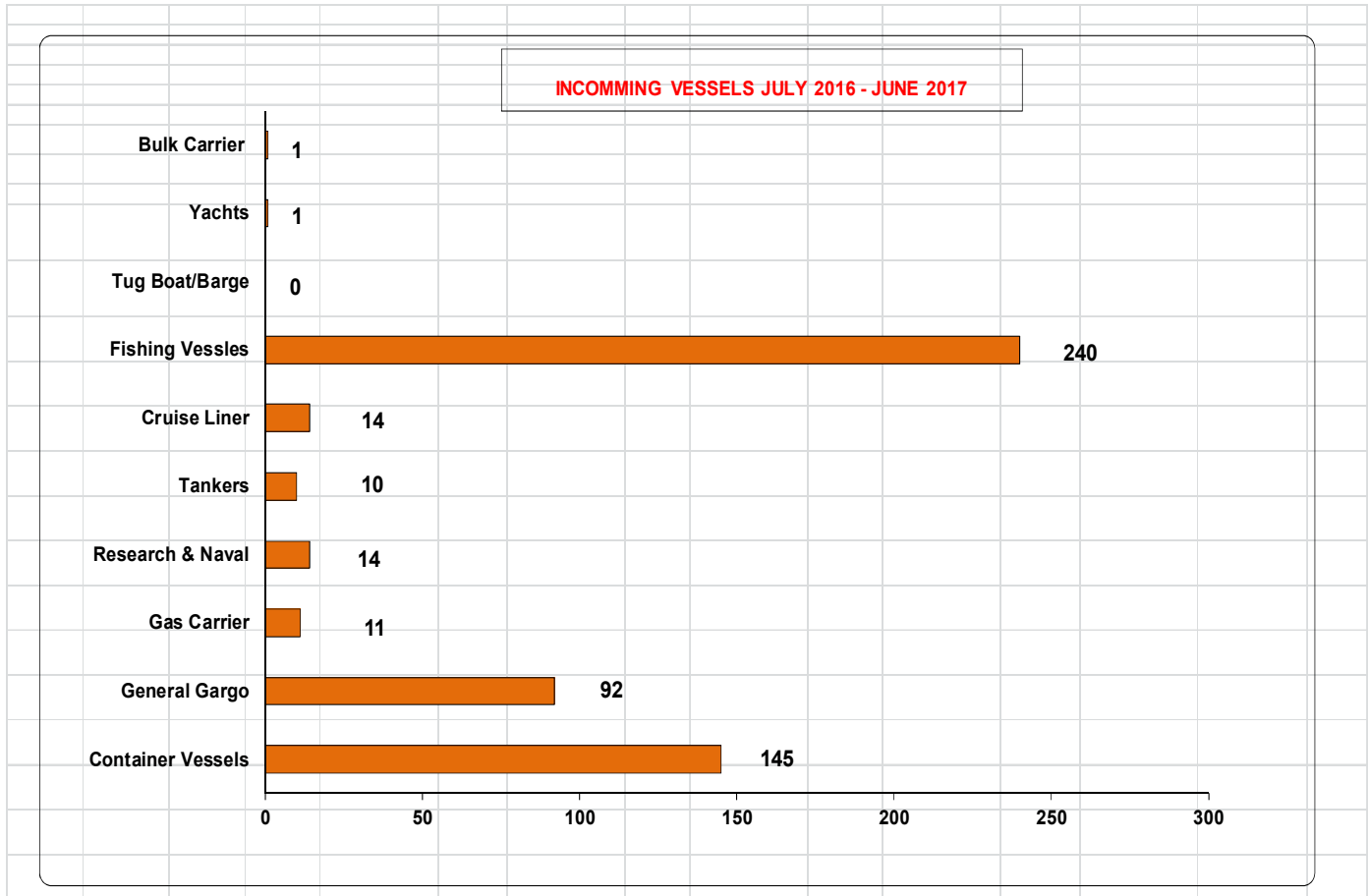
All inclusive cargo and passengers for chartered vessels to Tokelau.

Arrival & Departure Passengers (Apia-Pagopago-Apia)



Arrival & Departure Passengers (Apia-Tokelau-Apia)





INCOMING VESSELS JULY 2016 - JUNE 2017
SORTED BY TYPE OF VESSELS

TOTAL				
Type of Vessels	# of Vessels	Percentage	GRT	Percentage
Container Vessels	145	27	1,702,034	57
General Gargo	92	17	74,731	2
Gas Carrier	11	2	41,349	1
Research & Naval	14	3	25,376	1
Tankers	10	2	297,896	10
Cruise Liner	14	3	783,284	26
Fishing Vessles	240	45	65,542	2
Tug Boat/Barge	0	0	0	0
Yachts	1	0	281	0
Bulk Carrier	1	0	6,171	0
Total	528	100	2,996,664	100

SUMMARY OF INCOMING VESSELS FROM JULY 2016 TO JUNE 2017

TYPES OF VESSELS

Months	Container Vessels		General Cargo		Gas Carrier		Research & Naval/Patrol		Tankers		Cruise Liner		Fishing Vessels		Sailing/ Yachts Vessels		Fish Carrier		Bulk Carrier		Live Stock		Total		
	# of Vessels	GRT	# of Vessels	GRT	# of Vessels	GRT	# of Vessels	GRT	# of Vessels	GRT	# of Vessels	GRT	# of Vessels	GRT	# of Vessels	GRT	# of Vessels	GRT	# of Vessels	GRT	# of Vessels	GRT	# of Vessels	GRT	
July	10	123,079	8	4,731	1	3,759	1	1,740	0	0	0	0	30	5,106	0	0	0	0	0	0	0	0	0	50	138,415
August	13	144,851	9	4,466	1	3,759	1	3,600	1	30,048	1	55,877	22	33,327	0	0	0	0	0	0	0	0	0	48	275,928
September	12	137,420	9	5,562	1	3,759	2	2,160	0	0	0	0	34	6,450	0	0	0	0	0	0	0	0	58	155,351	
October	11	141,034	5	2,486	0	0	0	0	1	30,108	3	195,771	31	4,729	0	0	0	0	0	0	0	0	0	51	374,128
November	11	132,289	5	3,590	2	7,518	1	169	1	29,593	2	121,939	17	1,797	0	0	0	0	0	0	0	0	39	296,895	
December	12	153,323	8	5,068	1	3,759	0	0	1	29,942	0	0	19	1,611	0	0	0	0	0	0	0	0	41	193,703	
January	14	154,009	9	4,462	0	0	0	0	1	29,578	2	56,776	16	1,666	0	0	0	0	0	0	0	1	6,171	43	252,662
February	10	112,244	8	3,968	1	3,759	0	0	1	29,593	2	121,178	13	1,347	0	0	0	0	0	0	0	0	35	272,089	
March	13	151,382	7	9,327	1	3,759	3	5,037	1	29,578	3	201,466	10	1,328	0	0	0	0	0	0	0	0	38	401,877	
April	13	146,972	10	20,513	1	3,759	1	1,748	1	29,935	0	0	10	2,108	0	0	0	0	0	0	0	0	36	205,035	
May	13	145,335	6	5,486	1	3,759	5	10,922	1	29,579	1	30,277	15	3,463	0	0	0	0	0	0	0	0	42	228,821	
June	13	160,096	8	5,072	1	3,759	0	0	1	29,942	0	0	23	2,610	1	281	0	0	0	0	0	0	47	201,760	
Total	145	1,702,034	92	74,731	11	41,349	14	25,376	10	297,896	14	783,284	240	65,542	1	281	0	0	0	0	0	1	6,171	528	2,996,664

SAMOA PORTS AUTHORITY
MATAUTU, APIA-